



AKRF, Inc.  
440 Park Avenue South New York, NY 10016  
212-696-0670

Submitted to:

**Cayuga Indian Nation  
P.O. Box 11  
Versailles, New York 14168**

## PHASE I ENVIRONMENTAL SITE ASSESSMENT

**299 and 303 Cayuga Street  
Village of Union Springs, New York**

Project Number: 40212

**April 2009**

April 28, 2009

Mr. Clint Halftown  
Cayuga Indian Nation  
P.O. Box 11  
Versailles, NY 14168

Re: Phase I Environmental Site Assessment  
299 and 303 Cayuga Street,  
Cayuga County Tax Map No.134.17-1-1.21 and 134.17-1-1.121  
Village of Union Springs, New York 13160  
AKRF Project Number 40212

Dear Mr. Halftown:

AKRF, Inc. is pleased to submit this Phase I Environmental Site Assessment Report for the above-referenced site. This report includes the findings of a site inspection, an evaluation of available historical information, the interpretation of selected federal and state environmental databases, and a review of selected Cayuga County records. AKRF, Inc. met the requirements of American Society for Testing and Materials (ASTM) as established by ASTM Standard E1527-05 unless noted otherwise in Section 7: "Limitations".

We appreciate the opportunity to provide you with our services. If you should have any questions or comments regarding the enclosed report, please do not hesitate to contact us.

Sincerely,  
AKRF, Inc.

---

Marc S. Godick, LEP  
Senior Vice President

---

Kerry Gallagher  
Environmental Scientist

Enc.

## EXECUTIVE SUMMARY

AKRF, Inc. (AKRF) was retained by Cayuga Indian Nation of New York State to perform a Phase I Environmental Site Assessment of the property located at 299 and 303 Cayuga Street in the Village of Union Springs, Cayuga County, New York. The Property comprised a convenience store, gasoline filling station, car wash, and an asphalt-paved surface parking lot. The Property was approximately 2-acres in size, legally defined as Cayuga County Tax Map parcel No.134.17-1-1.21 and 134.17-1-1.121. The Property was located in a predominantly rural area, abutted by undeveloped land and residences to the north, New York State Route 90 (a.k.a. Cayuga Street) to the east, undeveloped land to the west, and a retail shop to the south.

The objective of this assessment was to identify any potential environmental concerns associated with the site resulting from past or current site usage or usage of neighboring properties. This Phase I Environmental Site Assessment was performed in accordance with customary principles and practices in the environmental consulting industry, and in conformance with the scope and limitations of ASTM Standard E1527-05, *Standard Practice for Environmental Site Assessments: Phase I Environmental Site Assessment Practice*. Any exceptions to, or deletions from, this practice are described in Section 7.0 of this report. This assessment revealed the following evidence of recognized environmental conditions in connection with the property:

- The Property contained a convenience store and gasoline filling station, a car wash, and an asphalt-paved surface parking lot. The current and past use of the Property as a gasoline filling station could potentially have caused a release of petroleum contamination to soil or groundwater. The underground storage tank leak detection system reported in the environmental database for all the tanks currently in use at the Property did not indicate any releases of petroleum. Registration for the current USTs was not up to date with NYSDEC. In, addition, there was no documentation found for maintenance, leak detection, fluid measurement records, closure sampling related to the former underground tanks, or activities related to the former site building. Historical or undocumented spills could have contaminated soil and groundwater beneath the site.
- The Cayuga County Clerk's Office reports the structures to have been constructed in 1994 and 1999, at a time when ACMs were rarely used in construction; however, suspect ACMs may be present such as within pipe chases, behind walls, or in other hidden locations.
- The maintenance and storage areas and the public restrooms contained general cleaning chemicals. No odors or observation of releases were noted during the site inspection. Chemicals should be stored properly, in accordance with manufacturers' specifications and applicable local, state and federal regulations.
- According to data compiled in 2008 by the Bureau of Radiation Protection, a division of the New York State Department of Health, Cayuga County has one of the higher average levels of basement radon measurements in New York State at 4.37 picocuries/liter, above the USEPA recommended action level of 4.0 picocuries/liter.

### Recommendations:

- A subsurface (Phase II) investigation is recommended for 299 Cayuga Street based upon the former and existing use as a gasoline station. The compliance status of the USTs, including registration with NYSDEC, should be further evaluated and addressed, as warranted. The investigation should include the collection of soil and groundwater samples from areas adjacent to current and/or former

underground tanks, dispenser islands, and site structures to determine if a release of petroleum has occurred.

- Prior to any demolition or proposed development activities, all universal wastes and chemicals stored on-site should be disposed of in accordance with all applicable regulations.
- Prior to any renovation or demolition, a comprehensive asbestos survey of the affected areas should be conducted. If materials prove to contain asbestos, they should be properly removed and disposed of in accordance with all state and federal requirements by a licensed asbestos abatement contractor.
- Radon levels would need to be tested in accordance with applicable regulations for any future on-site structures containing a basement or below grade floors.

## TABLE OF CONTENTS

EXECUTIVE SUMMARY .....	i
1.0 INTRODUCTION .....	1
2.0 PHYSICAL SITE DESCRIPTION.....	2
2.1 General Site Conditions .....	2
2.2 Topography and Hydrogeology .....	2
2.3 Storage Tanks .....	3
2.3.1 Underground Storage Tanks (USTs) .....	3
2.3.2 Aboveground Storage Tanks (ASTs).....	3
2.4 Polychlorinated Biphenyls (PCBs) .....	3
2.5 Lead-Based Paint.....	3
2.6 Utilities.....	3
2.7 Waste Management and Chemical Handling .....	4
2.8 Radon .....	4
2.9 Asbestos-Containing Materials (ACM) .....	4
3.0 ADJACENT LAND USE.....	4
4.0 PROPERTY HISTORY AND RECORDS REVIEW .....	5
4.1 Prior Ownership and Usage.....	5
4.1.1 Historical Maps .....	5
4.1.2 Historical Aerial Photographs .....	5
4.1.3 Property Tax Files and Zoning Records .....	6
4.1.4 Recorded Land Title Records.....	6
4.2 Regulatory Review .....	6
4.2.1 Federal Review.....	6
4.2.2 State Review .....	8
4.2.3 Local Review .....	11
4.2.4 Additional Record Sources .....	11
5.0 USER-PROVIDED INFORMATION .....	12
6.0 PREVIOUS STUDIES.....	12
7.0 LIMITATIONS AND DATA GAPS .....	14
8.0 CONCLUSIONS AND RECOMMENDATIONS .....	15
9.0 SIGNATURE PAGE .....	17
10.0 QUALIFICATIONS .....	18
11.0 REFERENCES .....	19

## FIGURES

- Figure 1 - Project Site Location  
Figure 2 - Site Plan Detail

## APPENDICES

- Appendix A - Photographic Documentation  
Appendix B - Historical Maps/Aerial Photographs  
Appendix C - Local Records  
Appendix D - Regulatory Records Review

## 1.0 INTRODUCTION

AKRF, Inc. (AKRF) was retained by Cayuga Indian Nation of New York State to perform a Phase I Environmental Site Assessment of the property located at 299 and 303 Cayuga Street in the Village of Union Springs, Cayuga County, New York (Property). The Property comprised a convenience store, gasoline filling station, car wash, and an asphalt-paved surface parking lot. The Property was approximately 2-acres in size, legally defined as Cayuga County Tax Map parcel No.134.17-1-1.21 and 134.17-1-1.121. The Property was located in a predominantly rural area, abutted by undeveloped land and residences to the north, New York State Route 90 (a.k.a. Cayuga Street) to the east, undeveloped land to the west, and a retail shop to the south.

The scope of services for this assessment included the following:

The scope of services for this assessment was in conformance with ASTM Standard E1527-05 (*Standard Practice for Environmental Site Assessments: Phase I Environmental Site Assessment Practice*), with any exceptions to, or deletions from, this practice described in Section 7.0: "Limitations and Data Gaps." AKRF's scope addressed the ASTM scope by conducting the following:

- Observations of the Property (reconnaissance) were made to identify potential sources or indications of hazardous substances, including: aboveground storage tanks (ASTs); underground storage tanks (USTs); tank vents and fill ports; transformers and other items that could contain polychlorinated biphenyls (PCBs), drums or areas where hazardous materials were used, stored, or disposed; stained surfaces and soils; stressed vegetation, leaks, odors. In addition, where possible, neighboring properties were viewed, but only from public rights-of-way, to identify similar concerns.
- Readily available geological and groundwater (hydrogeological) information were evaluated to assist in determining the potential for contamination migration within, from and onto the Property.
- Historical topographic maps and aerial photographs for the Property and adjacent properties were reviewed to evaluate historic land uses.
- The following federal regulatory databases were reviewed to determine the regulatory status of the Property and properties within the ASTM-specified radii: National Priority List (NPL); Comprehensive Environmental Response, Compensation, and Liability Information System (CERCLIS); Emergency Response Notification System (ERNS); Toxic Chemical Release Inventory System (TRIS); the Permit Compliance System of Toxic Wastewater Discharges (WWD); the Air Discharge Facilities Index (ADF) the USEPA Civil Enforcement Docket. The federal listing of facilities which are subject to corrective action under the Resource Conservation and Recovery Act (CORRACTS) is discussed with the State databases of RCRA listings.
- The following state regulatory databases were reviewed to determine the regulatory status of the Property and properties within the ASTM-specified radii, hazardous material spills (SPILLS); Resource Conservation and Recovery Act Notifiers (RCRA); Chemical Bulk Storage (CBS); Solid Waste Facilities (SWF); Petroleum Bulk Storage (PBS); State Inactive Hazardous Waste Disposal Sites (SHWS); Major Oil Storage Facilities (MOSF); Historic Utility Sites; Environmental Restoration Program (ERP); Voluntary Cleanup Program (VCP); and Brownfield Cleanup Program (BCP).
- A review of pertinent local (obtained at the County Clerk's Office of Cayuga County, NY) and online records for the Property was conducted.

In addition to the ASTM Scope items, AKRF's scope (unless noted in Section 7.0) included:

- A state database of radon concentrations was used to determine whether indoor radon levels in the area (data are by county) generally comply with United States Environmental Protection Agency (USEPA) guidelines.

## **2.0 PHYSICAL SITE DESCRIPTION**

Visual inspection of the site and adjacent areas was performed on March 17, 2009 by Kerry Gallagher of AKRF. At the time of the inspection, the weather was sunny and approximately 40 °F, the visibility good. The site was inspected for the presence of stained surfaces and soils, stressed vegetation, storage tanks, drums, leaking pipes, transformers, suspect asbestos-containing materials, suspect lead-containing paint, and any other evidence of hazardous material usage and storage on-site. Photographs documenting the site inspection are included in Appendix A.

### **2.1 General Site Conditions**

The Property comprised a single-story concrete structure occupied by a convenience store, associated gasoline filling station, a single-story concrete car wash structure, and an asphalt-paved surface parking lot. The Property was operated by Lakeside Trading, an enterprise of the Cayuga Indian Nation of New York. The convenience store building was centrally located on the southern parcel (134.17-1-1.121) and was of steel and concrete construction with concrete and gypsum board walls, suspended acoustical ceiling tiles, and floors of resilient floor tiles and concrete. The store was used for the selling of a variety of food products, beverages, cigarettes, lottery tickets and other miscellaneous sundries. Three pump islands with a metal awning and support beams housing gasoline, diesel and kerosene dispensers were located immediately east of the convenience store. Man-way covers for the underground storage tanks (USTs) were observed southwest of the pump islands and south of the convenience store. A small storage building was noted on the northwest portion of the asphalt-paved parking lot west of the convenience store and was used for the storage of miscellaneous supplies and maintenance tools. A gravel parking lot and low-lying wetlands were located directly south of the Property. The car wash was located on the northern parcel (134.17-1-1.21) of the convenience store/gasoline filling station separated by asphalt/concrete curbs and comprised a concrete superstructure with exterior walls of ceramic tile and a metal roof. The carwash contained three coin operated washing bays with floor drains in each, which were reported to be connected to the municipal sewer system by site personnel. No sheens, staining or petroleum odors were noted throughout the Property during the site inspection.

### **2.2 Topography and Hydrogeology**

The surface topography is relatively level. Based on reports compiled by the U.S. Geological Survey Springport, New York Quadrangle, the property lies at an elevation of approximately 450 feet above the National Geodetic Vertical Datum of 1929 (an approximation of mean sea level). Based on the elevation of Cayuga Lake, located approximately one mile to the west, groundwater is expected at a depth of approximately 70 feet. Groundwater most likely flows in a westerly direction toward Cayuga Lake. However, actual groundwater flow at the site can be affected by many factors including subsurface openings or obstructions, bedrock geology, and other factors beyond the scope of this study.

## **2.3 Storage Tanks**

### **2.3.1 Underground Storage Tanks (USTs)**

During the site inspection, manhole covers for several underground storage tanks (USTs) were observed southwest of the dispenser pumps. A review of the State regulatory records identified the Property as a Petroleum Bulk Storage facility that contained two former 6,000-gallon and one former 5,000-gallon gasoline underground storage tanks and one former 6,000-gallon diesel underground storage tank, all listed as installed in 1966 and removed in October 1995. Additionally, one 10,000-gallon and two 5,000-gallon gasoline underground storage tanks and one 3,000-gallon kerosene underground storage tank, all listed as unregistered, were cited with an installation date of 1995. A 5,000-gallon diesel underground storage tank was listed as administratively closed with an installation date of 1995. Off-site USTs are discussed in Section 4.2.2.

### **2.3.2 Aboveground Storage Tanks (ASTs)**

A review of the State regulatory records identified the Property as a Petroleum Bulk Storage facility with one 550-gallon kerosene aboveground storage tank installed in 1966 and subsequently closed and removed. No ASTs were observed during the site visit. Off-site ASTs are discussed in Section 4.2.2.

## **2.4 Polychlorinated Biphenyls (PCBs)**

Prior to 1979, polychlorinated biphenyls (PCBs) were widely used for their cooling properties in electrical equipment such as transformers, capacitors, switches and voltage regulators. The Cayuga County Clerk's Office reports the one-story convenience store building currently on the Property to have been built in 1999 and the car wash to have been built in 1994. Based on the age of on-site structures, PCB-containing equipment was not likely to be used during construction. No leaks or stains were noted around lighting fixtures and switches, which do not currently pose a threat to human health or the environment.

## **2.5 Lead-Based Paint**

The use of lead-based paint in commercial structures was severely restricted by the Consumer Products Safety Commission in 1977. Lead-based paint is potentially hazardous when in a deteriorating condition (i.e., chipped, broken, crumbling, pulverized); lead is potentially harmful to humans, particularly children, if ingested, inhaled or otherwise absorbed.

The Cayuga County Clerk's Office reports the one-story convenience store building currently on the Property to have been built in 1999 and the car wash to have been built in 1994. Based on the age of on-site structures, lead-based paint is not likely to be present. Painted surfaces of the on-site structures were in good condition and no peeling or flaking was noted. At the time of the site inspection, the structures did not include a child care center or other facility where the extended presence of young children would be typical.

## **2.6 Utilities**

The Property was provided with natural gas heat by New York State Electric and Gas Company (NYSEG) and serviced by the municipal water and sewer system of the Town of Union Springs.



## **2.7 Waste Management and Chemical Handling**

Solid waste was collected in trash receptacles throughout the property and removed weekly by a private hauler. No hazardous waste storage or generation was noted during the site visit.

## **2.8 Radon**

Radon is a colorless, odorless gas produced by the radioactive decay of certain elements. The most common sources of radon are igneous and metamorphic rocks containing uranium (such as pitchblende), granite, shale, or phosphate, as well as soils or sediments derived from these parent materials. Radon may also be found in soils contaminated with certain industrial wastes (such as uranium or phosphate mine tailings) or in earth-derived building products which include industrial wastes that contain phosphate slag. In areas where the potential for radon accumulation is high, special ventilation systems may offset potential health hazards.

According to data compiled in 2008 by the Bureau of Radiation Protection, a division of the New York State Department of Health, Cayuga County has one of the higher average levels of basement radon measurements in New York State at 4.37 picocuries/liter, above the USEPA recommended action level of 4.0 picocuries/liter.

## **2.9 Asbestos-Containing Materials (ACM)**

Asbestos, a known human carcinogen, is a generic name assigned to a group of naturally occurring minerals exhibiting high tensile strength and possessing excellent fire resistance and insulating properties. These minerals include chrysotile, amosite, crocidolite, actinolite, tremolite, and anthophyllite. Asbestos is commonly found as a component of building materials including: thermal system insulation (TSI), pipe insulation, spray-applied fireproofing, spray- or trowel-applied surfacing materials, vinyl asbestos floor tiles and sheeting, plaster, sheetrock/joint compound, ceiling tiles, fire door fill, roofing materials, thermal gaskets, mastics, caulks and a range of other products.

Building materials containing greater than one percent asbestos are considered to be asbestos-containing materials (ACM). ACM are classified as friable or non-friable. Friable ACM are those which can be crumbled, pulverized, or reduced to powder when dry by hand or other mechanical pressure. Friable ACM, such as thermal system insulation and spray-applied fireproofing, are generally associated with a higher risk of releasing asbestos fibers than non-friable ACM, such as vinyl floor tiles and built-up roofing materials.

The Cayuga County Clerk's Office reports the structures on the Property to have been constructed in 1994 and 1999, at a time when ACMs were rarely used in construction; however, suspect ACMs may be present in some building materials.

## **3.0 ADJACENT LAND USE**

The Property was located in a predominantly rural area, abutted by undeveloped land and residences to the north, commercial properties including a retail store and gaming facility to the south, vacant land to the west, and New York State Route 90 (a.k.a. Cayuga Street) to the east followed by vacant land and commercial development.

## 4.0 PROPERTY HISTORY AND RECORDS REVIEW

### 4.1 Prior Ownership and Usage

#### 4.1.1 Historical Maps

Historical Sanborn Insurance map coverage was not available for the Property and surrounding area. Historical U.S. Geological Survey (USGS) Topographic maps covering the Property were viewed online for evidence of prior land usage. Specifically, USGS 15 and 7.5 Minute series Topographic maps of the Auburn, NY Quadrangle and local maps from the years 1899, and 1956 were reviewed and are included in Appendix B. Historical maps from 1812, 1829, 1838, and 1875 were also reviewed from previous investigation reports.

##### 1812

The Property and surrounding area was shown as being part of the Cayuga Reservation land.

##### 1829 and 1838

The Property and surrounding area was shown as being vacant undeveloped land.

##### 1875 and 1899

The Property was shown as vacant undeveloped land. The surrounding properties consisted largely of undeveloped land with sparse buildings and Union Springs Central School, located approximately 1 mile south of the Property.

##### 1956

Two buildings were shown on the Property. The surrounding properties consisted largely of undeveloped land with sparse buildings and Union Springs Central School, located approximately 1 mile south of the Property.

To summarize, the Property was undeveloped and part of the Cayuga Reservation on the 1812 map and remained undeveloped to at least 1899. By 1956 the Property had two structures. The surrounding properties were mainly vacant with some development noted.

#### 4.1.2 Historical Aerial Photographs

Aerial photographs of the Property and adjacent areas dated 1938, 1988, 1995, 2003, and 2007 were reviewed and are summarized below. Historical aerial photographs for the Property are included in Appendix B and Figure 2.

##### 1938

The Property was shown as undeveloped agricultural land. The surrounding properties were largely undeveloped agricultural land or wooded areas. Historical aerials for the Property are included in Appendix B.

##### 1988

Two buildings and three smaller structures, a wooded area, and paved land were noted on the Property. The buildings were likely associated with operation of the gasoline station and show the former site layout. Buildings were noted south of the Property and to the

east across Route 90. The surrounding properties were largely undeveloped agricultural land or wooded areas.

#### 1995

The use of the Property could not be determined due to the poor legibility of the map. Uses in the surrounding area appeared to be generally similar to the 1988 map with additional development of surrounding properties.

#### 2003 and 2007

Two buildings were noted on the Property and appear to be the structures currently in use on the Property.

To summarize, historical aerial photographs indicated that the Property was undeveloped in 1938, and was developed with two buildings and three smaller structures by 1988 and two buildings that appear to be the structures currently in use by 2007. No evidence of dumping and/or industrial use on-site was apparent in any of the aerial photographs.

### **4.1.3 Property Tax Files and Zoning Records**

Electronic information provided by the Cayuga County Tax Assessor's Office identified the Property as Tax Map Parcel No. 134.17-1-1.21 (car wash) and 134.17-1-1.121 (convenience store and gasoline filling station). The Property is zoned for commercial use by the Town of Union Springs Zoning Department.

### **4.1.4 Recorded Land Title Records**

The Property was transferred from B.E.P. Properties, Inc. to Cayuga Nation of New York in April 2003; further documentation from the Cayuga County Clerk's office is included in Appendix C.

## **4.2 Regulatory Review**

Toxics Targeting, Inc. of Ithaca, New York, was contracted to obtain information regarding the regulatory status of the property and the surrounding area. This information included records from databases maintained by the USEPA and New York State Department of Environmental Conservation (NYSDEC). AKRF reviewed these records to identify the use, generation, storage, treatment and/or disposal of hazardous material and chemicals, or releases of such materials which may impact the Property. All applicable regulatory databases meet ASTM guidelines requesting utilization of information within 90 days' receipt from the appropriate agency. Copies of the pertinent sections of the Toxics Targeting, Inc. report are included in Appendix D.

### **4.2.1 Federal Review**

The federal databases searched included the National Priority List (NPL); Comprehensive Environmental Response, Compensation, and Liability Information System (CERCLIS); Emergency Response Notification System (ERNS); Toxic Chemical Release Inventory System (TRIS); the Permit Compliance System of Toxic Wastewater Discharges (WWD); the USEPA Civil Enforcement Docket.; and the Air Discharge Facilities (ADF) The federal listing of facilities which are subject to corrective action under the Resource Conservation and Recovery Act (CORRACTS) is discussed with the State databases of RCRA listings.

National Priority List (NPL)

The NPL is the USEPA's database of some of the most serious uncontrolled or abandoned hazardous waste sites identified for probable remedial action under the Superfund Program. NPL sites can pose a significant risk of stigmatizing surrounding properties and thus impacting property values.

No NPL sites were identified within one-mile of the Property. An unmapped site was labeled in the database report as EPA ID No. NYN000204289 and was identified as "Cayuga Groundwater Contamination Site, State Route 326". The listing was associated with a plume of contaminated groundwater from an unknown source(s), which covers an area of approximately 3,050 acres or 4.8 square miles. The plume consisted of chlorinated solvents and had contaminated 51 residential drinking water wells. The plume was identified as being in the vicinity of the site.

The Property is served by public water supply and the drinking water is not at risk. Due to the anticipated depth to groundwater (greater than 20 feet below grade), the plume is not anticipated to impact soil gas beneath the floor of the site building.

Comprehensive Environmental Response, Compensation and Liability Information System (CERCLIS)

CERCLIS is a compilation of sites which the USEPA has investigated, or plans to investigate, pursuant to the Superfund Act of 1980 (CERCLA). As such, some of these sites may ultimately present concerns and others may not (but could still pose a perceived threat, thus affecting property values).

No CERCLIS sites were identified within a 1/2-mile of the Property.

Emergency Response Notification System (ERNS)

This federal database, compiled by the Emergency Response Notification System, records and stores information on certain reported releases of petroleum and other potentially hazardous substances.

A filling station on Route 90 in Union Springs (possibly the Property) was listed for one spill, although it was not mapped on this Toxics Targeting report. The Sunoco Gas/Sunshine Food filling station was listed with a spill on February 24, 1995. The spill was reportedly due to a leaking gasoline tank pipe or a possible hole in the tank. The quantity spilled was not specified. Although the ERNS listing noted that a call to DEC would be made, no spill was reported in the State SPILLS database. This release may have occurred on the Property and may have affected subsurface conditions.

Toxic Chemical Release Inventory System (TRIS)

The TRIS contains information reported by a variety of industries on their annual estimated releases of certain chemicals. No TRIS sites were identified within 1/8-mile of the Property.

Permit Compliance System of Toxic Wastewater Discharge (WWD)

This database includes certain sites which discharge wastewater containing potentially hazardous chemicals.

No WWD facilities were reported within 1/8-mile of the Property.

United States Environmental Protection Agency Civil Enforcement Docket

This database tracks civil judiciary cases filed on behalf of the USEPA by the Department of Justice.

No facilities were listed in the USEPA's Civil Enforcement Docket within 1/8-mile of the Property.

Air Discharge Facilities (ADF) Index

This federal database includes information on certain air emission sources.

No ADF facilities were identified within a 1/8-mile radius of the Property.

#### **4.2.2 State Review**

The state records reviewed included listings of hazardous material spills; Resource Conservation and Recovery Act (RCRA) Notifiers; Chemical Bulk Storage (CBS); Solid Waste Facilities (SWF); Petroleum Bulk Storage (PBS); State Inactive Hazardous Waste Disposal Sites (SHWS); State Hazardous Substance Waste Disposal Sites (SHSWDS); Major Oil Storage Facilities (MOSF); Brownfield Sites; Historic Utility Sites.; Environmental Restoration Program (ERP) sites; Voluntary Cleanup Program (VCP) sites and Brownfield Cleanup Program (BCP) sites.

New York SPILLS Database

This database includes releases reported to the NYSDEC, including tank test failures (for USTs only) and tank failures.

The Property was cited with several spills, and seven closed status spills were reported within a 1/2-mile radius of the Property:

- Express Mart, located at 299 Cayuga Street was listed with a closed status spill in June 2000. The release was reported to have been due to a faulty shutoff valve on a fuel line hose on a customer's vehicle. The quantity spilled was listed as 5 gallons. The release was reported to have been cleaned with speedy dry (absorbent) and the case achieved a closed regulatory status in October 2000. In November 2001, a spill was reported at the facility related to an accidental release of gasoline from a filling nozzle on pavement. The quantity spilled was reported as 8 gallons. Cleanup activities were initiated and the spill was closed later that same month. The facility was also listed with a closed spill in June 2001. The spill file notes indicated that a faulty fuel tank on a customer's car caused a release of petroleum on black top. The quantity spilled was listed as 10 gallons. The release was reported to have been cleaned with speedy dry (an absorbent) and the case achieved a closed regulatory status in April 2002.

The above listed spills involved minor surface releases and are not anticipated to have affected subsurface conditions on the Property based on details listed in the database. However, undocumented releases from this facility may have affected subsurface conditions beneath the Property.

Three spills were listed for the former Union Springs Mobil Service Station, located at the intersection of Route 326 and Route 90, approximately 300 feet north of the Property:

- Union Springs Mobil was listed with a closed status spill in June of 1989 when gasoline fumes were reported after opening a manhole. The spill was closed on the same day it was reported and no further significant information was given about the incident in the regulatory database. The site was also listed with a closed status spill in March 1991 when approximately 2 gallons of gasoline were released on the surrounding pavement due to an overfilled fuel tank on a customer's car. The release reportedly caused fumes in the office at the facility. Corrective actions were taken and the spill was closed. A spill was reported in August 1988 in the roadway adjacent to this facility due to a faulty hydraulic hose on a tanker trailer. The quantity released was listed as 30 gallons. Residual soil contamination noted as a result of the incident was reportedly cleaned following the day of the incident and the spill was closed in June 1989.

The above listed spills involved minor releases and are not anticipated to have affected the Property based on details listed in the database; however, given the proximity of this facility, undocumented releases have the potential to have affected subsurface conditions beneath the site.

#### Resource Conservation and Recovery Act (RCRA) Notifiers Listings

This database lists sites that have filed notification forms regarding hazardous waste activity, including: treatment, storage and disposal facilities (TSDs); small-quantity generator (SQG) and large-quantity generators (LQG); and transporters regulated under RCRA. The discussion below includes any CORRACTS listings of facilities which are subject to corrective action under RCRA.

No CORRACTS facilities were identified within a one-mile radius of the Property. No RCRA TSD facilities were identified within a ½-mile radius of the Property. No RCRA Generators/Transporters were reported within a ⅛-mile radius of the Property.

#### Chemical Bulk Storage (CBS) Database

The CBS lists facilities that store regulated non-petroleum substances in aboveground tanks with capacities greater than 185 gallons and/or in underground tanks of any size.

No CBS facilities are listed within ⅛-mile of the Property.

#### Solid Waste Facilities (SWF)

This database includes a listing of landfills, incinerators, transfer stations, recycling centers, and other sites which manage solid waste.

No Solid Waste Facilities were identified within a ½-mile radius of the Property.

#### Petroleum Bulk Storage (PBS) Database

This database lists facilities that registered having either aboveground or underground petroleum tanks with total storage exceeding 1,100 gallons. Facilities with more than 400,000 gallons appear on the Major Oil Storage Facilities (MOSF) database instead.

The Property was listed as a PBS facility:

**Table 1**  
**Area Petroleum Bulk Storage Facility Data**

Location	Capacity (gallons)	Product Stored	Status	Install Date
<b>Lakeside Trading/Rt. 90 (On-Site)</b>	6,000 UST	Gasoline	Closed-Removed	08/1966
	5,000 UST	Gasoline	Closed-Removed	08/1966
	6,000 UST	Diesel	Closed-Removed	08/1966
	6,000 UST	Gasoline	Closed-Removed	08/1966
	550 AST	Kerosene	Closed-Removed	09/1984
	10,000 UST	Gasoline	Unregistered	10/1995
	5,000 UST	Gasoline	Unregistered	10/1995
	5,000 UST	Gasoline	Unregistered	10/1995
	5,000 UST	Diesel	Administratively Closed*	10/1995
	3,000 UST	Kerosene	Unregistered	10/1995

**Notes:** AST - aboveground storage tank

UST - underground storage tank

\* - According to site personnel, there is an in-service 5,000-gallon diesel tank on-site.

#### State Inactive Hazardous Waste Disposal Site (SHWS) Registry

This program (also known as State Superfund) lists information regarding a variety of sites likely requiring cleanup.

No State Inactive Hazardous Waste Disposal Sites were reported within a one-mile radius of the Property.

#### State Hazardous Substance Waste Disposal Site (SHSWDS) Study

This database tracks certain sites that were not listed on SHWS, but may still require investigation and/or cleanup.

No SHSWDS were identified within a one-mile radius of the Property.

#### Major Oil Storage Facilities (MOSF) Database

These facilities have petroleum storage of 400,000 gallons or more.

No Major Oil Storage Facilities were listed within 1/8-mile of the Property.

#### Historic Utility Sites

This is an inventory of selected power generating facilities, manufactured gas plants and storage facilities, utility maintenance yards and other gas and electric utility sites identified in various historical documents, maps and annual reports from 1898 to 1950.

No Historic Utility Sites were listed within 1/8-mile of the Property.

#### Environmental Restoration Program

These sites (which are generally municipally-owned) are receiving New York State funding for site investigation and/or remediation. Some sites in this program have known contamination, whereas others have not had sufficient investigation to determine whether contamination is present.

No ERP sites were listed within ½-mile of the Property.

Voluntary Cleanup Program

The Voluntary Cleanup Program is a NYSDEC program for investigation and/or remediation of (generally) privately-owned sites. Some sites have known contamination, whereas others have not had sufficient investigation to determine whether contamination is present.

No VCP facilities were listed within ½-mile of the Property.

Brownfield Cleanup Program

This NYSDEC program is the successor to the Voluntary Cleanup Program. Again, some sites have known contamination, whereas others have not had sufficient investigation to determine whether contamination is present.

No BCP sites were listed within ½-mile radius of the Property.

#### **4.2.3 Local Review**

County Clerk's Office

Personnel interviewed at the Cayuga County Town Clerk's office did not provide information in addition to recorded documents for the Property (included in Appendix C).

#### **4.2.4 Additional Record Sources**

To enhance the search, ASTM requires that additional local records be checked when, in judgment of the environmental professional, such records are: 1) reasonably ascertainable; 2) useful, accurate and complete in light of the objective of the records review; and 3) are obtained in initial ESAs. These records include:

- Local Brownfields Lists
- Local Lists of Landfill/solid waste disposal sites
- Local Lists of Hazardous Waste/Contaminated Sites
- Local Land Records (for activity use limitations)
- Records of emergency release reports
- Records of contaminated public wells

Sources for these records may include:

- Department of Health/Environmental Division
- Building Permit/Inspection Department
- Local/Regional Pollution Control Agency
- Local/Regional Water Quality Agency
- Local Electric Utility (for PCB records)

In AKRF's judgment, no such additional local records (beyond those described in the immediately preceding section) are pertinent for the Property.



## 5.0 USER-PROVIDED INFORMATION

In preparing this Phase I ESA, AKRF requested that the client provide any pertinent information regarding the Property, specifically:

- The reason for performing the Phase I ESA;
- Whether they were aware of any pertinent current or historic activities at or near the Property, including but not limited to: hazardous substances or petroleum, waste management practices, filling or disposal drains, septic/sewer systems, and potable and non-potable wells;
- Owner and occupant information and whether they were aware of any previous Phase I ESAs or other potentially pertinent reports, plans or information;
- Whether any *environmental liens* or *activity and land use limitations* are in place or filed or recorded against the Property or whether there was pending, threatened, ongoing or past violations, litigation or enforcement action relevant to hazardous substances or petroleum products;
- Whether they had any specialized knowledge or experience related to the Property or nearby properties (e.g., specialized knowledge of the chemicals used by this type of business);
- Whether the (anticipated) purchase price reflects that the Property is or could be contaminated; and
- Whether they were aware of commonly known or reasonably ascertainable information about environmental conditions of the Property including current/past uses of the Property and adjacent properties.

Ms. B.J. Radford, Chief Operating Officer for the Cayuga Indian Nation, provided pertinent information related to the site's historical use. According to Ms Radford, this Phase I Environmental Site Assessment was being performed to evaluate the site as part of due diligence related to its proposed fee-to-trust acquisition. Ms. Radford provided previous environmental studies conducted on the Property, discussed further in Section 6.0. Ms. Radford indicated that the Property was historically used for agricultural crops and was unaware of any previous development at the site. Ms. Radford was not aware of any environmental liens or activity use limitations on the Property. To the extent that pertinent additional information was provided, it has been summarized elsewhere in this report.

## 6.0 PREVIOUS STUDIES

The following reports were provided to AKRF for review:

*Phase I Environmental Site Assessment, Express Mart & Car Wash, 299-303 Cayuga Street, Town of Springport, Cayuga County, NY, Environmental Compliance Management Corporation, March 2003*

In March 2003, Environmental Compliance Management Corporation (ECMC) conducted a Phase I Environmental Site Assessment at the Property. The site consisted of: two steel and concrete one-story buildings that housed a gasoline station/convenience store and carwash; covered gasoline, diesel, and kerosene delivery pumps; small grass areas; clean fill areas; and gravel parking areas, according to ECMC. ECMC reported that the site was listed in the New York State Department of Environmental Conservation (NYSDEC) leaking tanks (LTANKS) database for three documented spills. Spill# 0060020 occurred on June 8, 2000 due to a gasoline fill valve malfunction and was closed on October 24, 2000. Spill# 0102901 occurred on June 15,

2001 due to a gasoline tank that leaked approximately 10 gallons of gasoline and was reported to have been cleaned up with Speedi-dry absorbent. Spill# 0107937 occurred on November 3, 2001 due to human error which spilled approximately 8 gallons of gasoline, and was cleaned up with Speedi-dry. The Phase I ESA indicated that five underground storage tanks (gasoline, kerosene and diesel) were installed at this site in 1995 and were equipped with leak detection systems, and that the most recent tank and line tightness tests in March 2003 reported no failures. Therefore, ECMC concluded that although there was a potential of subsurface impact from the use of the Property as a filling station, no known contamination was present. No further studies were recommended by ECMC at the site.

## **7.0 LIMITATIONS AND DATA GAPS**

This assessment met the requirements of the American Society for Testing and Materials (ASTM) as established by ASTM Standard E1527-05 at the time it was performed, with the following limitations and data gaps:

- Interviews and user provided information were limited to those discussed in Section 5.0. To the extent that interviews were not conducted with the list of interviewees cited in the ASTM Standard (past and present owners, operators, and occupants of the Property and local government officials), AKRF does not believe that this represents a significant data gap likely to result in additional or significantly changed recognized environmental conditions or conclusions.
- The Property area history was not conducted in five-year intervals. However, sufficient information about the history of the site and surrounding area could be obtained from the available historical aerial photographs, local records, and interviews, and this data gap is not likely to alter the conclusions of this report.
- In the judgment of AKRF, none of these limitations or data gaps are likely to have affected the ability to identify Recognized Environmental Conditions (RECs).

## 8.0 CONCLUSIONS AND RECOMMENDATIONS

AKRF, Inc. (AKRF) was retained by Cayuga Indian Nation of New York State to perform a Phase I Environmental Site Assessment of the property located at 299 and 303 Cayuga Street in the Village of Union Springs, Cayuga County, New York. The Property comprised a convenience store, gasoline filling station, car wash, and an asphalt-paved surface parking lot. The Property was approximately 2-acres in size, legally defined as Cayuga County Tax Map parcel No.134.17-1-1.21 and 134.17-1-1.121. The Property was located in a predominantly rural area, abutted by undeveloped land and residences to the north, New York State Route 90 (a.k.a. Cayuga Street) to the east, undeveloped land to the west, and a retail shop to the south.

The objective of this assessment was to identify any potential environmental concerns associated with the site resulting from past or current site usage or usage of neighboring properties. This Phase I Environmental Site Assessment was performed in accordance with customary principles and practices in the environmental consulting industry, and in conformance with the scope and limitations of ASTM Standard E1527-05, *Standard Practice for Environmental Site Assessments: Phase I Environmental Site Assessment Practice*. Any exceptions to, or deletions from, this practice are described in Section 7.0 of this report. This assessment revealed the following evidence of recognized environmental conditions in connection with the property:

- The Property contained a convenience store and gasoline filling station, a car wash, and an asphalt-paved surface parking lot. The current and past use of the Property as a gasoline filling station could potentially have caused a release of petroleum contamination to soil or groundwater. The underground storage tank leak detection system reported in the environmental database for all the tanks currently in use at the Property did not indicate any releases of petroleum. Registration for the current USTs was not up to date with NYSDEC. In addition, there was no documentation found for maintenance, leak detection, fluid measurement records, closure sampling related to the former underground tanks, or activities related to the former site building. Historical or undocumented spills could have contaminated soil and groundwater beneath the site.
- The Cayuga County Clerk's Office reports the structures to have been constructed in 1994 and 1999, at a time when ACMs were rarely used in construction; however, suspect ACMs may be present such as within pipe chases, behind walls, or in other hidden locations.
- The maintenance and storage areas and the public restrooms contained general cleaning chemicals. No odors or observation of releases were noted during the site inspection. Chemicals should be stored properly, in accordance with manufacturers' specifications and applicable local, state and federal regulations.
- According to data compiled in 2008 by the Bureau of Radiation Protection, a division of the New York State Department of Health, Cayuga County has one of the higher average levels of basement radon measurements in New York State at 4.37 picocuries/liter, above the USEPA recommended action level of 4.0 picocuries/liter.

### Recommendations:

- A subsurface (Phase II) investigation is recommended for 299 Cayuga Street based upon the former and existing use as a gasoline station. The compliance status of the USTs, including registration with NYSDEC, should be further evaluated and addressed, as warranted. The investigation should include the collection of soil and groundwater samples from areas adjacent to current and/or former

underground tanks, dispenser islands, and site structures to determine if a release of petroleum has occurred.

- Prior to any demolition or proposed development activities, all universal wastes and chemicals stored on-site should be disposed of in accordance with all applicable regulations.
- Prior to any renovation or demolition, a comprehensive asbestos survey of the affected areas should be conducted. If materials prove to contain asbestos, they should be properly removed and disposed of in accordance with all state and federal requirements by a licensed asbestos abatement contractor.
- Radon levels would need to be tested in accordance with applicable regulations for any future development.

## **9.0 SIGNATURE PAGE**

I declare that, to the best of my professional knowledge and belief, I meet the definition of Environmental Professional as defined in §312.10 of 40 CFR 312

I have the specific qualifications based on education, training, and experience to assess a property of the nature, history, and setting of the Property for which the assessment was performed. I have performed all the appropriate inquiries in conformance with standards and practices set forth in 40 CFR Part 312.

---

Marc S. Godick, LEP  
Senior Vice President

---

Kerry Gallagher  
Environmental Scientist

## 10.0 QUALIFICATIONS

The purpose of this assessment was to convey a professional opinion about the potential presence or absence of contamination, or possible sources of contamination on the Property, and to identify existing and/or potential environmental problems associated with the Property including *Recognized Environmental Conditions* as defined in ASTM Standard E1527-05, *Standard Practice for Environmental Site Assessments: Phase I Environmental Site Assessment Practice*.

The assessment was performed in accordance with customary principles and practices in the environmental consulting industry, and in accordance with the above-referenced ASTM Standard, except as noted otherwise in Section 7.0. It should only be used as a guide in determining the possible presence or absence of hazardous materials on the Property at the time of the reconnaissance, as it is based upon the review of readily available records relating to both the Property and the surrounding area, as well as a visual reconnaissance of current conditions.

This Phase I Assessment is not, and should not be construed as, a guarantee, warranty, or certification of the presence or absence of hazardous substances, which can be made only with testing, and contains no formal plans or recommendations to rectify or remediate the presence of any hazardous substances which may be subject to regulatory approval. This report is not a regulatory compliance audit.

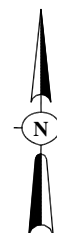
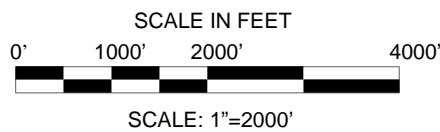
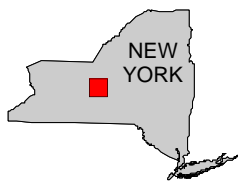
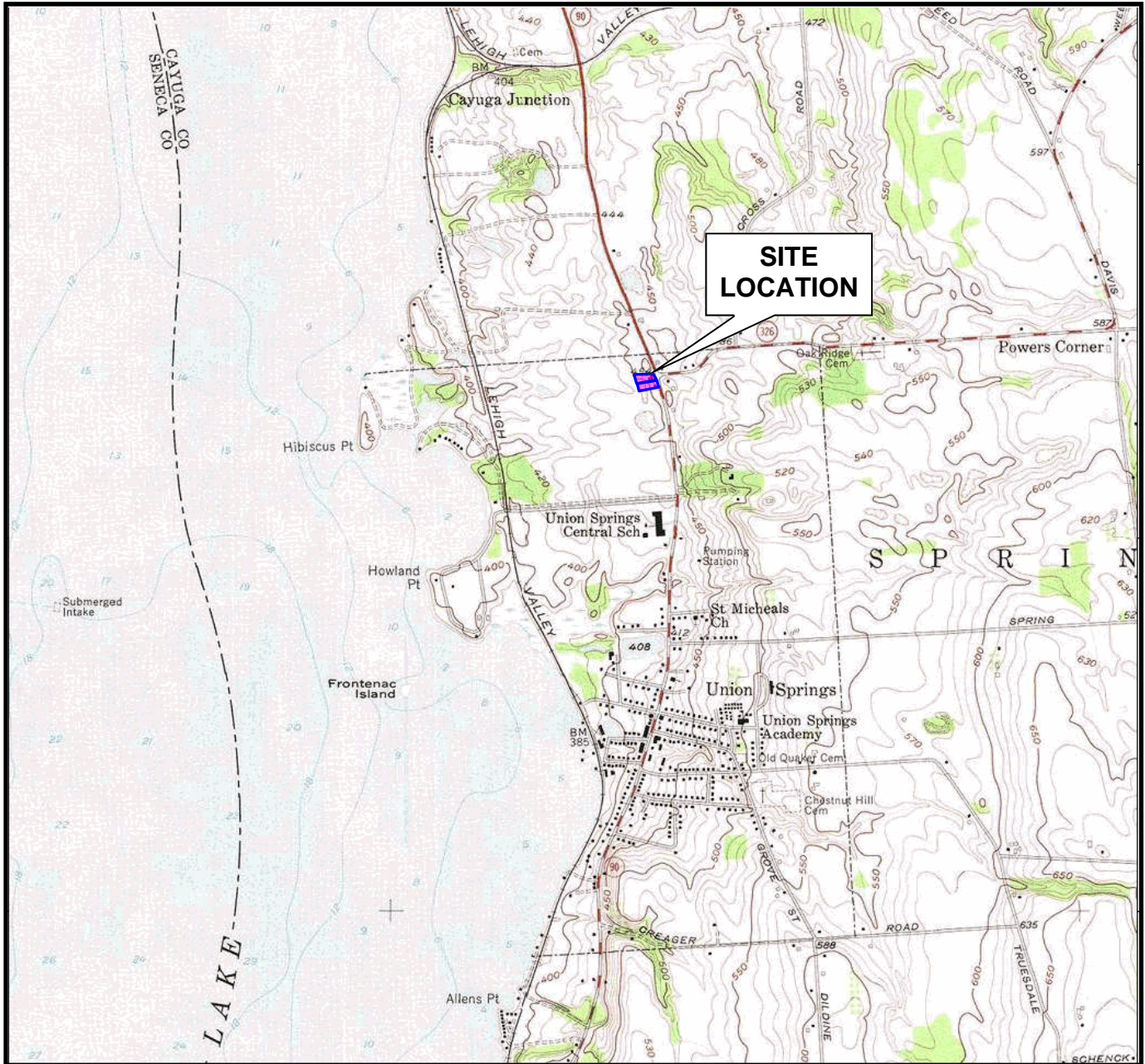
This report is based on services performed by AKRF, Inc. professional staff and observation of the Property and its surroundings. We represent that observations made in this assessment are accurate to the best of our knowledge, and that no findings or observations concerning the potential presence of hazardous substances have been withheld or amended. The research and reconnaissance have been carried to a level that meets accepted industry and professional standards. Nevertheless, AKRF and the undersigned shall have no liability or obligation to any party other than the Cayuga Indian Nation of New York State and AKRF's obligations and liabilities to the above, is limited to fraudulent statements made, or grossly negligent or willful acts or omissions.

## 11.0 REFERENCES

1. New York State Department of Health, Office of Public Health, "Environmental Radiation," *Short Term Basement Radon Measurements by County* October 2008.
2. Toxics Targeting, Inc., "Union Springs – Cayuga Street, Union Springs, New York 13160," *Regulatory Radius Search*, February 20, 2009.
3. U.S. Geological Survey; *Auburn Quadrangle*; 15 minute Series (Topographic); Scale 1:62,500; 1899; via <http://historical.mytopo.com/>.
4. U.S. Geological Survey; *Auburn Quadrangle*; 15 minute Series (Topographic); Scale 1:62,500; 1956; via <http://historical.mytopo.com/>.
5. Environmental Compliance Management Corporation, *Phase I Environmental Site Assessment, Express Mart & Car Wash, 299-303 Cayuga Street, Town of Springport, Cayuga County, New York*, March 2003.



## FIGURES



**SOURCE:**  
7.5 MINUTE SERIES USGS TOPOGRAPHIC MAP  
QUADRANGLE: AUBURN, NY 1956

**299 and 303 CAYUGA STREET  
UNION SPRINGS, NEW YORK**

**PROJECT SITE LOCATION**



**Environmental Consultants**  
440 Park Avenue South, New York, N.Y. 10016

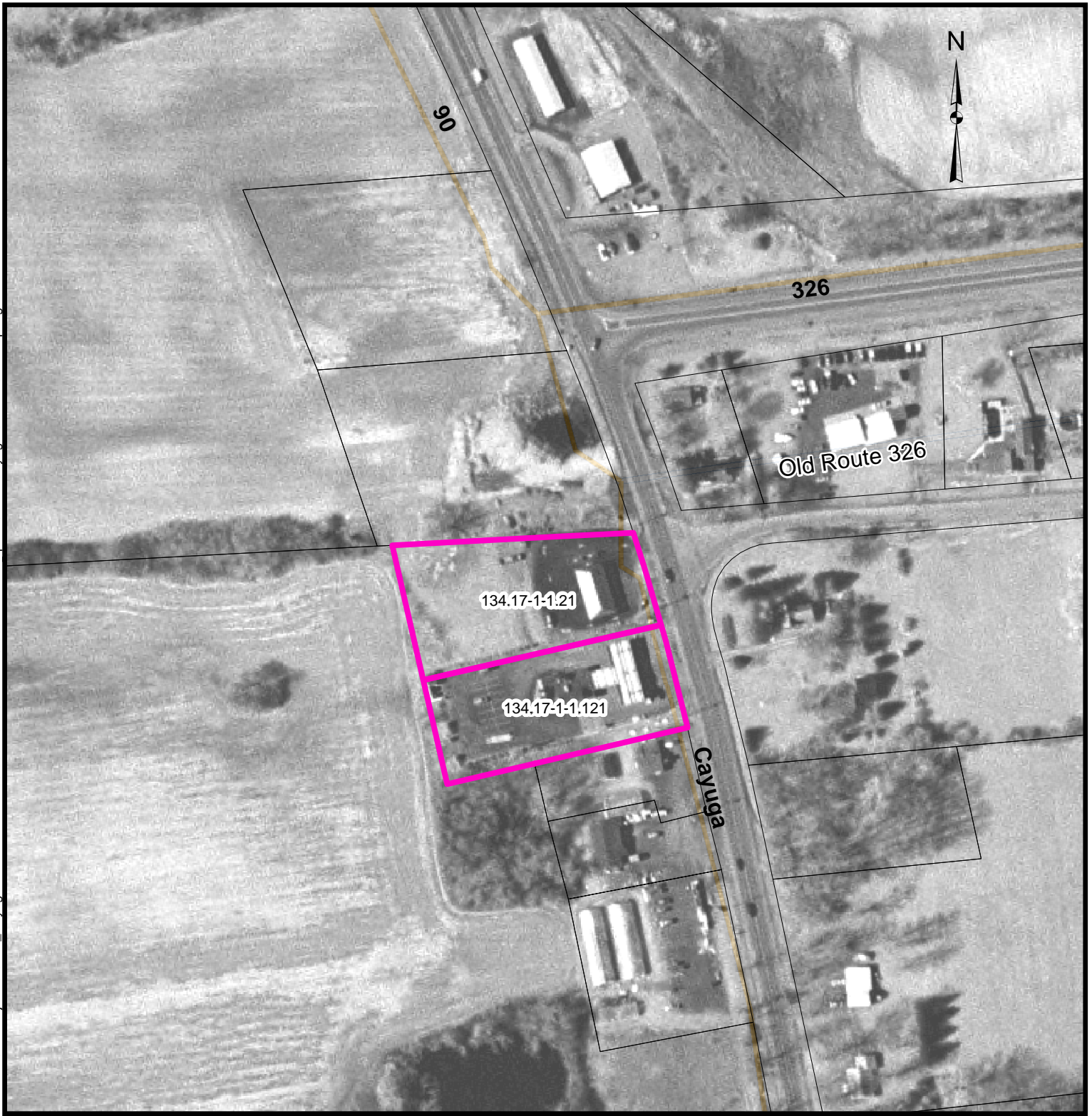
DATE  
**4.06.08**

PROJECT No.  
**40212**

SCALE  
**as shown**

FIGURE  
**1**






Source: NYS Clearing House  
Aerial Photo 2007

### Legend

 299 & 303 Cayuga Site Boundary

0 50 100 200  
  
Feet

299 & 303 CAYUGA STREET  
UNION SPRINGS, NEW YORK

**SITE PLAN DETAIL**



Environmental Consultants  
440 Park Avenue South, New York, N.Y. 10016

DATE  
04.02.09

PROJECT No.  
40212

FIGURE  
2

**APPENDIX A**  
**PHOTOGRAPHIC DOCUMENTATION**





Photograph 1: Interior of convenience store.



Photograph 2: Gas station exterior, showing pump islands.



Photograph 3: Gas station waste storage area.





Photograph 4: Convenience store soda dispensers and storage area.



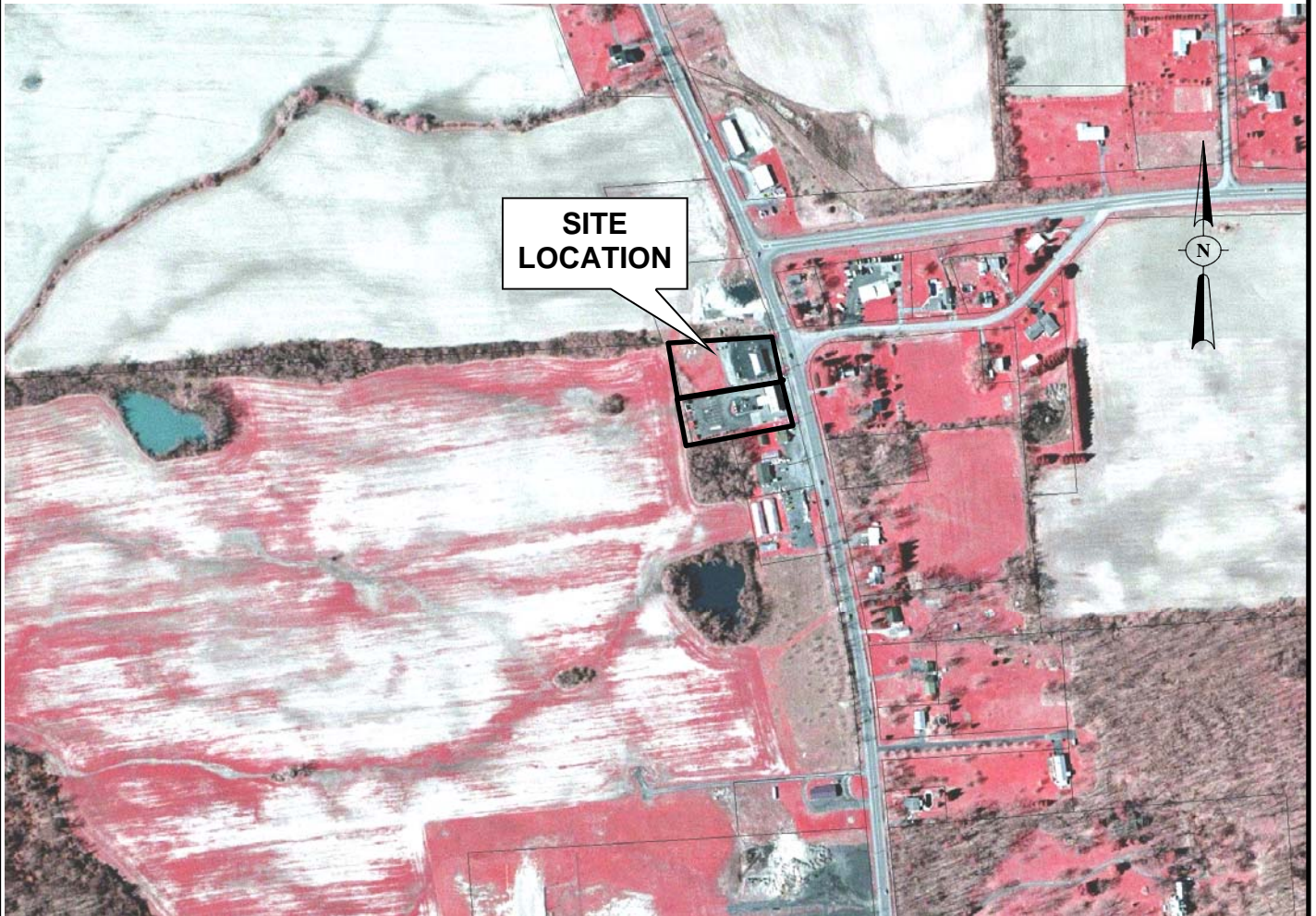
Photograph 5: Front entrance of car wash building.



Photograph 6: Rear of car wash building, showing drainage onto street.

**APPENDIX B**  
**HISTORICAL MAPS /AERIAL PHOTOGRAPHS**





**SOURCE:**  
AERIAL PHOTO from NYS  
GIS Clearinghouse 2003



**LEGEND:**

— PROJECT SITE BOUNDARY

**299 and 303 CAYUGA STREET  
UNION SPRINGS, NEW YORK**

**2003 AERIAL PHOTO**



**Environmental Consultants**  
440 Park Avenue South, New York, N.Y. 10016

DATE  
**4.15.09**

PROJECT No.  
**40212**

SCALE  
**NTS**

FIGURE  
**-**





**SOURCE:**  
USGS AERIAL PHOTO  
Union Springs, NY 1995

**LEGEND:**

—— PROJECT SITE BOUNDARY

**299 and 303 CAYUGA STREET  
UNION SPRINGS, NEW YORK**

**1995 AERIAL PHOTO**



**Environmental Consultants**  
440 Park Avenue South, New York, N.Y. 10016

DATE  
**4.15.09**

PROJECT No.  
**40212**

SCALE  
**NTS**

FIGURE  
**-**



**SOURCE:**  
USGS AERIAL PHOTO  
Union Springs, NY 1988

**LEGEND:**

— PROJECT SITE BOUNDARY

**299 and 303 CAYUGA STREET  
UNION SPRINGS, NEW YORK**

**1988 AERIAL PHOTO**



**Environmental Consultants**  
440 Park Avenue South, New York, N.Y. 10016

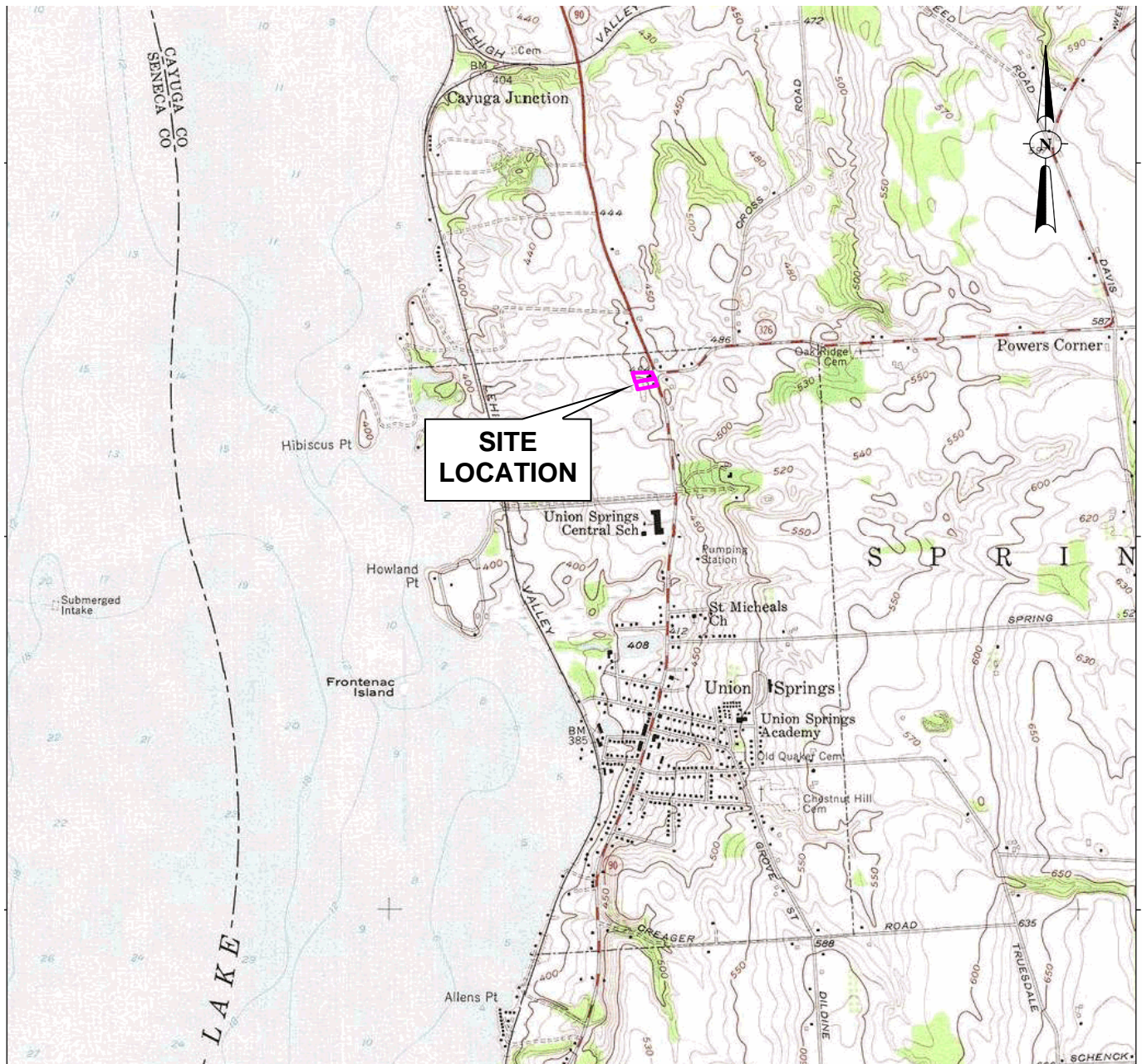
DATE  
**4.15.09**

PROJECT No.  
**40212**

SCALE  
**NTS**

FIGURE  
**-**





**SOURCE:**  
7.5 MINUTE SERIES USGS TOPOGRAPHIC MAP  
QUADRANGLE: AUBURN, NY 1956

**LEGEND:**

 PROJECT SITE BOUNDARY

**299 and 303 CAYUGA STREET  
UNION SPRINGS, NEW YORK**

**1956 TOPOGRAPHIC MAP**



**Environmental Consultants**  
440 Park Avenue South, New York, N.Y. 10016

DATE  
**4.15.09**

PROJECT No.  
**40212**

SCALE  
**NTS**

FIGURE  
**-**



**SOURCE:**  
USGS AERIAL PHOTO  
US\_Hibiscus, Union Springs, NY 1938

**LEGEND:**  
— PROJECT SITE BOUNDARY

**299 and 303 CAYUGA STREET  
UNION SPRINGS, NEW YORK**

**1938 AERIAL PHOTO**



**Environmental Consultants**  
440 Park Avenue South, New York, N.Y. 10016

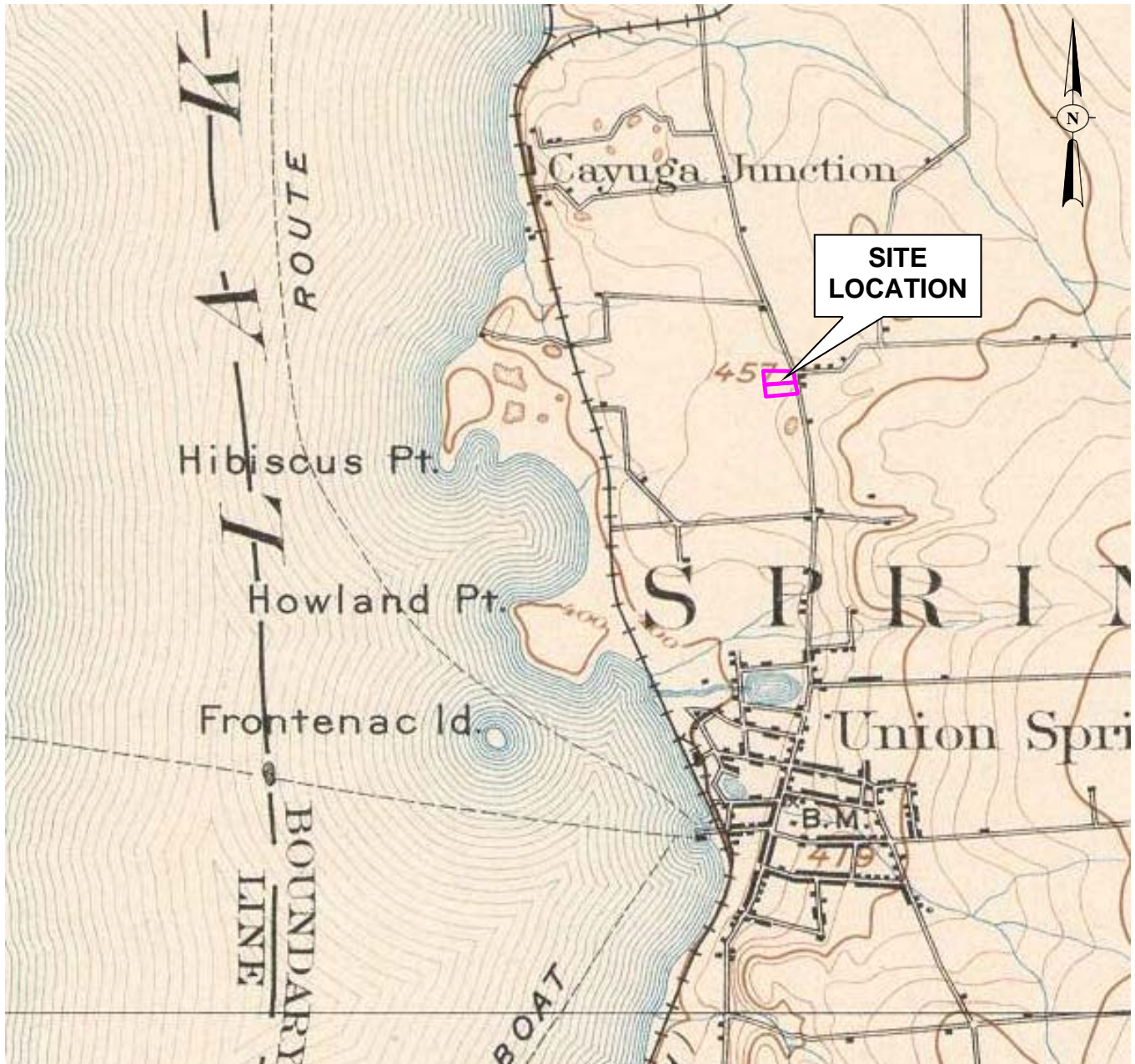
DATE  
**4.15.09**

PROJECT No.  
**40212**

SCALE  
**NTS**

FIGURE  
**-**





**SOURCE:**  
15 MINUTE SERIES USGS TOPOGRAPHIC MAP  
UNION SPRINGS, NY. 1899

**LEGEND:**

 PROJECT SITE BOUNDARY

**299 and 303 CAYUGA STREET  
UNION SPRINGS, NEW YORK**

**1899 TOPOGRAPHIC MAP**



**Environmental Consultants**  
440 Park Avenue South, New York, N.Y. 10016

DATE  
**4.15.09**

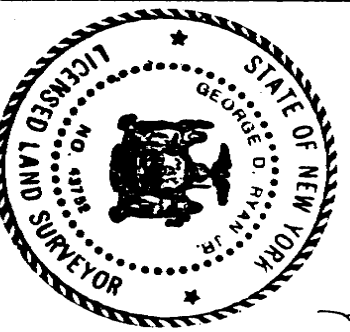
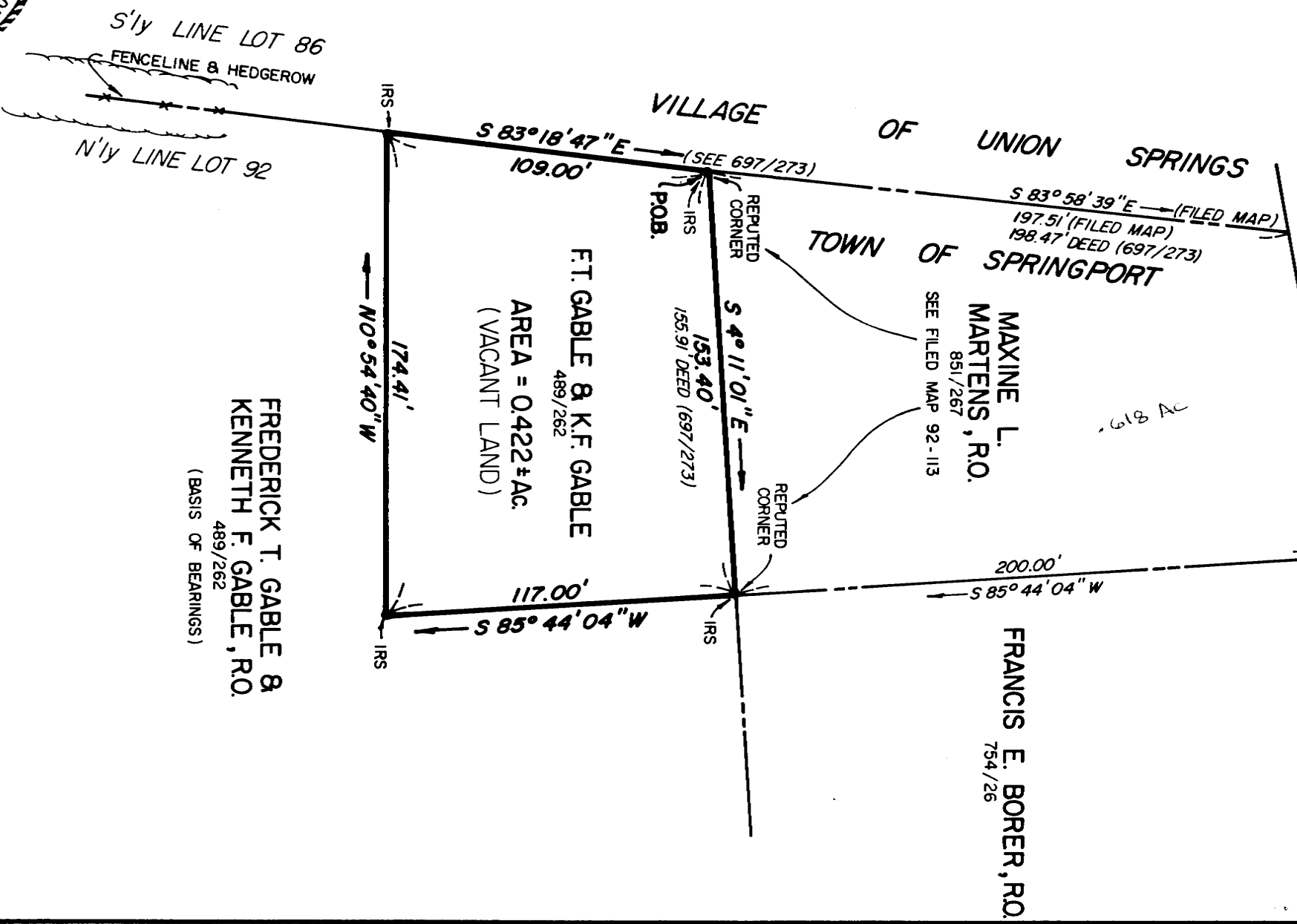
PROJECT No.  
**40212**

SCALE  
**NTS**

FIGURE  
**-**

**APPENDIX C**  
**LOCAL RECORDS**

N.Y.S. ROUTE 90  
APPROXIMATE LOCATION, HIGHWAY BOUNDARY  
OCT 25 P 3:50



93-206

93-206

THE UNDERSIGNED SURVEYOR HEREBY CERTIFIES THAT THIS IS AN ACCURATE  
MAP OF AN ACTUAL SURVEY COMPLETED 12-4-1992  
SUBJECT TO ANY STATE OF FACTS AN ACCURATE AND UP TO DATE AB-  
STRACT OF TITLE WILL SHOW SINCE 12-8-1992  
DATED 12-8-1992  
SIGNED *George D. Ryan, Jr.*

"Unauthorized alteration or addition to a survey map bearing a licensed land surveyor's seal  
is a violation of section 7209, subdivision 2, of the New York State Education Law."  
"Copies from the original of this survey may not be made with an original of the land sur-  
veyor's sealed seal or its embossed seal shall not be considered to be a valid true copy."

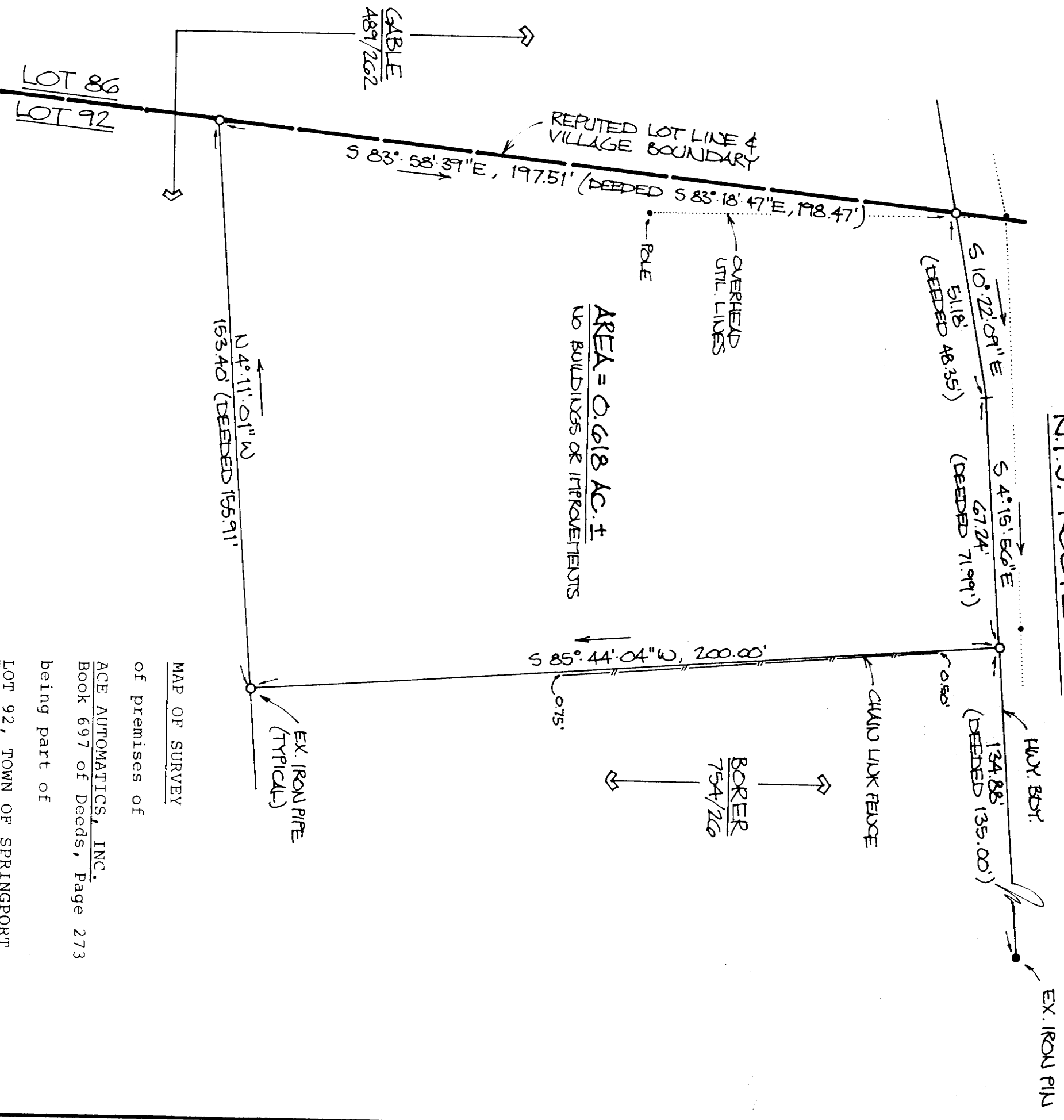
MAP OF SURVEY of Gable  
PARCEL OF LAND

Part of Lot 92 Town of SPRINGPORT  
County of CAYUGA State of New York  
Scale of 1 inch = 50 Feet Date 12-7-1992

RYAN SURVEY  
Surveyors • Planners • Consultants  
Porter, Building  
Northern Lights Office Park  
Syracuse, N.Y. 13220-3225  
(315) 455-5996

SEE FILED MAP 76/27428

N.Y.S. ROUTE 90



MAP OF SURVEY  
of premises of

ACE AUTOMATICS, INC.  
Book 697 of Deeds, Page 273  
being part of

LOT 92, TOWN OF SPRINGPORT  
VILLAGE OF UNION SPRINGS  
CAYUGA COUNTY, NEW YORK

AUGUST 17, 1990

SCALE: 1" = 30'

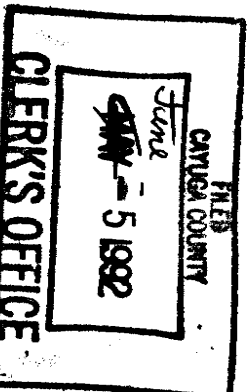


ANDERSON  
SURVEY

262 SOUTH STREET ROAD  
AUBURN, NEW YORK 13021  
(315) 252-7177

92-113

92-113



This map was prepared ☒ with / ☐ without  
benefit of an abstract of title.

Certifications indicated hereon signify that this  
survey was prepared in accordance with the exist-  
ing Code of Practice for Land Surveys adopted by  
the New York State Association of Professional  
Land Surveyors. Said certifications shall run only  
to the person for whom the survey is prepared, and  
on his behalf to the title company, governmental  
agency and lending institution listed hereon, and  
to the assignees of the lending institution. Certifi-  
cations are not transferable to additional institutions  
or subsequent owners.

Unauthorized alteration or addition to a survey  
map bearing a licensed land surveyor's seal is a  
violation of section 7209, sub-division 2, of the  
New York State Education Law.

Only copies from the original of this survey  
marked with an original of the land surveyor's  
embossed seal shall be considered to be valid true  
copies.

*[Signature]*

Dan Michael Anderson, P.L.S. #49723

9267



## FOR COUNTY USE ONLY

C1. SWIS Code

C2. Date Deed Recorded

Month Day Year

C3. Book

C4. Page

## REAL PROPERTY TRANSFER REPORT

STATE OF NEW YORK

STATE BOARD OF REAL PROPERTY SERVICES

RP - 5217

RP-5217 Rev 3/97



## PROPERTY INFORMATION

1. Property Location

STREET NUMBER

Cayuga Street

STREET NAME

Springport

CITY OR TOWN

Union Springs

VILLAGE

13160

ZIP CODE

2. Buyer Name

LAST NAME / COMPANY

REROB, LLC

FIRST NAME

LAST NAME / COMPANY

FIRST NAME

3. Tax Billing Address

Indicate where future Tax Bills are to be sent if other than buyer address (at bottom of form)

LAST NAME / COMPANY

FIRST NAME

STREET NUMBER AND STREET NAME

CITY OR TOWN

STATE

ZIP CODE

4. Indicate the number of Assessment Roll parcels transferred on the deed

# of Parcels

OR

Part of a Parcel

(Only if Part of a Parcel) Check as they apply:

4A. Planning Board with Subdivision Authority Exists

4B. Subdivision Approval was Required for Transfer

4C. Parcel Approved for Subdivision with Map Provided

5. Deed Property Size

FRONT FEET

DEPTH

OR

ACRES

6. Seller Name

LAST NAME / COMPANY

MARTENS

FIRST NAME

Maxine L.

LAST NAME / COMPANY

FIRST NAME

7. Check the box below which most accurately describes the use of the property at the time of sale:

Check the boxes below as they apply:

A ☐ One Family ResidentialE ☐ AgriculturalI ☐ Community ServiceB ☐ 2 or 3 Family ResidentialF ☒ CommercialJ ☐ Industrial

8. Ownership Type is Condominium

C ☐ Residential Vacant LandG ☐ ApartmentK ☐ Public Service

9. New Construction on Vacant Land

D ☐ Non-Residential Vacant LandH ☐ Entertainment / AmusementL ☐ Forest

10A. Property Located within an Agricultural District

10B. Buyer received a disclosure notice indicating that the property is in an Agricultural District

## SALE INFORMATION

11. Sale Contract Date

Month Day Year

7

/

02

12. Date of Sale / Transfer

Month Day Year

10

/

08

13. Full Sale Price

1 8 5 0 0 0 0 0

(Full Sale Price is the total amount paid for the property including personal property. This payment may be in the form of cash, other property or goods, or the assumption of mortgages or other obligations.) Please round to the nearest whole dollar amount.

14. Indicate the value of personal property included in the sale

- 0 - 0 0

15. Check one or more of these conditions as applicable to transfer:

- A ☐ Sale Between Relatives or Former Relatives  
B ☐ Sale Between Related Companies or Partners in Business  
C ☐ One of the Buyers is also a Seller  
D ☐ Buyer or Seller is Government Agency or Lending Institution  
E ☐ Deed Type not Warranty or Bargain and Sale (Specify Below)  
F ☐ Sale of Fractional or Less than Fee Interest (Specify Below)  
G ☐ Significant Change in Property Between Taxable Status and Sale Date:  
H ☐ Sale of Business is Included in Sale Price  
I ☐ Other Unusual Factors Affecting Sale Price (Specify Below)  
J ☐ None

## ASSESSMENT INFORMATION - Data should reflect the latest Final Assessment Roll and Tax Bill

16. Year of Assessment Roll from which information taken

0 2

17. Total Assessed Value (of all parcels in transfer)

8 3 6 0 0

18. Property Class

4 3 6 -

19. School District Name

Union Springs CSD

20. Tax Map Identifier(s) / Roll Identifier(s) (If more than four, attach sheet with additional identifier(s))

134.17-1-1.21

## CERTIFICATION

I certify that all of the items of information entered on this form are true and correct (to the best of my knowledge and belief) and I understand that the making of any willful false statement of material fact herein will subject me to the provisions of the penal law relative to the making and filing of false instruments.

## BUYER

REROB, LLC

By: Francis E. Swan 10-11-02

BUYER SIGNATURE

DATE

6367

STREET NUMBER

Kinne Road

STREET NAME (AFTER SALE)

DeWitt

CITY OR TOWN

NY

STATE

13214

ZIP CODE

## SELLER

By: Maxine L. Martens 10/5/02

SELLER SIGNATURE

Maxine L. Martens

DATE

## BUYER'S ATTORNEY

HINMAN, NOWARD &amp; KATTELL, LLP

LEVY

LAST NAME

Lillian L.

FIRST NAME

(607) (308)

AREA CODE

231-6725

TELEPHONE NUMBER

NEW YORK STATE  
COPY

FOR COUNTY USE ONLY

C1. SWIS Code

C2. Date Deed Recorded

Month Day Year

C3. Book

C4. Page

## REAL PROPERTY TRANSFER REPORT

STATE OF NEW YORK

STATE BOARD OF REAL PROPERTY SERVICES

RP - 5217

RP-5217 Rev 3/97



## PROPERTY INFORMATION

1. Property Location

STREET NUMBER

STREET NAME

CITY OR TOWN

VILLAGE

ZIP CODE

2. Buyer Name

LAST NAME / COMPANY

FIRST NAME

LAST NAME / COMPANY

FIRST NAME

3. Tax Billing Address

LAST NAME / COMPANY

FIRST NAME

STREET NUMBER AND STREET NAME

CITY OR TOWN

STATE

ZIP CODE

4. Indicate the number of Assessment Roll parcels transferred on the deed

0 0 2

# of Parcels OR

Part of a Parcel

#2

(Only if Part of a Parcel) Check as they apply:

4A. Planning Board with Subdivision Authority Exists

4B. Subdivision Approval was Required for Transfer

4C. Parcel Approved for Subdivision with Map Provided

5. Deed Property Size

FRONT FEET

DEPTH

OR

ACRES

6. Seller Name

LAST NAME / COMPANY

FIRST NAME

LAST NAME / COMPANY

FIRST NAME

7. Check the box below which most accurately describes the use of the property at the time of sale:

Check the boxes below as they apply:

A One Family Residential

E Agricultural

I Community Service

8. Ownership Type is Condominium

B 2 or 3 Family Residential

F Commercial

J Industrial

9. New Construction on Vacant Land

C Residential Vacant Land

G Apartment

K Public Service

10A. Property Located within an Agricultural District

D Non-Residential Vacant Land

H Entertainment / Amusement

L Forest

10B. Buyer received a disclosure notice indicating

that the property is in an Agricultural District

## SALE INFORMATION

11. Sale Contract Date

Month Day Year

12. Date of Sale / Transfer

Month Day Year

13. Full Sale Price

(Full Sale Price is the total amount paid for the property including personal property. This payment may be in the form of cash, other property or goods, or the assumption of mortgages or other obligations.) Please round to the nearest whole dollar amount.

14. Indicate the value of personal property included in the sale

15. Check one or more of these conditions as applicable to transfer:

- A Sale Between Relatives or Former Relatives
- B Sale Between Related Companies or Partners in Business
- C One of the Buyers is also a Seller
- D Buyer or Seller is Government Agency or Lending Institution
- E Deed Type not Warranty or Bargain and Sale (Specify Below)
- F Sale of Fractional or Less than Fee Interest (Specify Below)
- G Significant Change in Property Between Taxable Status and Sale Dates
- H Sale of Business is Included in Sale Price
- I Other Unusual Factors Affecting Sale Price (Specify Below)
- J None

## ASSESSMENT INFORMATION - Data should reflect the latest Final Assessment Roll and Tax Bill

16. Year of Assessment Roll from which information taken

0 2

17. Total Assessed Value (of all parcels in transfer)

80 420 #2

18. Property Class

4 8 4 - 1

19. School District Name

Union Springs

20. Tax Map Identifier(s) / Roll Identifier(s) (If more than four, attach sheet with additional identifier(s))

134.17-1-1.121

#1

134.17-1-1.21

#2

CAYUGA COUNTY OFFICE OF  
REAL PROPERTY SERVICES  
160 GENESEE ST. 6th FLOOR

NK

## CERTIFICATION

AUBURN, NY 13021

I certify that all of the items of information entered on this form are true and correct (to the best of my knowledge and belief) and I understand that the making of any willful false statement of material fact herein will subject me to the provisions of the penal law relative to the making and filing of false instruments.

## BUYER

## BUYER'S ATTORNEY

BUYER SIGNATURE

DATE

LAST NAME

FIRST NAME

P. O. Box 11

STREET NUMBER

STREET NAME (AFTER SALE)

Versailles

NY

14168

CITY OR TOWN

STATE

ZIP CODE

## SELLER

SELLER SIGNATURE

DATE

LAST NAME

FIRST NAME

AREA CODE

TELEPHONE NUMBER

NEW YORK STATE  
COPY

FOR COUNTY USE ONLY

C1. SWIS Code

C2. Date Deed Recorded

04/23/03  
Month Day Year

C3. Book

1129

C4. Page

100

## REAL PROPERTY TRANSFER REPORT

STATE OF NEW YORK

STATE BOARD OF REAL PROPERTY SERVICES

RP - 5217

RP-5217 Rev 3/97



## PROPERTY INFORMATION

1. Property Location 299 &amp; 303 Cayuga Street

Springport

CITY OR TOWN

Union Springs

VILLAGE

ZIP CODE

2. Buyer Name B.E.P. Properties, Inc.

LAST NAME / COMPANY

FIRST NAME

LAST NAME / COMPANY

FIRST NAME

3. Tax Billing Address Indicate where future Tax Bills are to be sent if other than buyer address (at bottom of form)

LAST NAME / COMPANY

FIRST NAME

STREET NUMBER AND STREET NAME

CITY OR TOWN

STATE

ZIP CODE

4. Indicate the number of Assessment Roll parcels transferred on the deed

2

# of Parcels OR

Part of a Parcel

01.00

5. Deed Property Size

135

x

317

OR

ACRES

(Only if Part of a Parcel) Check as they apply:

4A. Planning Board with Subdivision Authority Exists

4B. Subdivision Approval was Required for Transfer

4C. Parcel Approved for Subdivision with Map Provided

6. Seller Name Rerob, LLC

LAST NAME / COMPANY

FIRST NAME

LAST NAME / COMPANY

FIRST NAME

7. Check the box below which most accurately describes the use of the property at the time of sale:

A One Family Residential

B 2 or 3 Family Residential

C Residential Vacant Land

D Non-Residential Vacant Land

E Agricultural

F Commercial

G Apartment

H Entertainment / Amusement

I Community Service

J Industrial

K Public Service

L Forest

Check the boxes below as they apply:

8. Ownership Type is Condominium

9. New Construction on Vacant Land

10A. Property Located within an Agricultural District

10B. Buyer received a disclosure notice indicating that the property is in an Agricultural District

## SALE INFORMATION

11. Sale Contract Date

/ N/A /

Month

Day

Year

12. Date of Sale / Transfer

4 / 23 / 03

Month

Day

Year

13. Full Sale Price

1,310,000.00

(Full Sale Price is the total amount paid for the property including personal property. This payment may be in the form of cash, other property or goods, or the assumption of mortgages or other obligations.) Please round to the nearest whole dollar amount.

14. Indicate the value of personal property included in the sale

0.00

15. Check one or more of these conditions as applicable to transfer:

- A Sale Between Relatives or Former Relatives
- B Sale Between Related Companies or Partners in Business
- C One of the Buyers is also a Seller
- D Buyer or Seller is Government Agency or Lending Institution
- E Deed Type not Warranty or Bargain and Sale (Specify Below)
- F Sale of Fractional or Less than Fee Interest (Specify Below)
- G Significant Change in Property Between Taxable Status and Sale Date
- H Sale of Business is Included in Sale Price
- I Other Unusual Factors Affecting Sale Price (Specify Below)
- J None

## ASSESSMENT INFORMATION - Data should reflect the latest Final Assessment Roll and Tax Bill

16. Year of Assessment Roll from which information taken

02

17. Total Assessed Value (of all parcels in transfer)

18. Property Class

4,3,6

19. School District Name

Union Springs

20. Tax Map Identifier(s) / Roll Identifier(s) (If more than four, attach sheet with additional identifier(s))

1 134.17-1-1.21

Assess 83600

2 134.17-1-1.121

325600

## CERTIFICATION

I certify that all of the items of information entered on this form are true and correct (to the best of my knowledge and belief) and I understand that the making of any willful false statement of material fact herein will subject me to the provisions of the penal law relative to the making and filing of false instruments.

BUYER

B.E.P. PROPERTIES, INC.

BUYER'S ATTORNEY

By:

BUYER SIGNATURE

DATE

Mathias

LAST NAME

Paul W.

FIRST NAME

935

STREET NUMBER

Sheridan Drive

STREET NAME (AFTER SALE)

(716)

AREA CODE

874-3800

TELEPHONE NUMBER

Tonawanda

CITY OR TOWN

NY

STATE

14150

ZIP CODE

SELLER

REROB, LLC

By:

SELLER SIGNATURE

DATE

Francis E. Rorer, Member

NEW YORK STATE  
COPY



## Property Description Report For: 303 Cayuga St, Municipality of Union Springs



**Status:** Active  
**Roll Section:** Taxable  
**Swis:** 055401  
**Tax Map ID #:** 134.17-1-1.21  
**Property Class:** 436 - Self carwash  
**Site:** COM 1  
**In Ag. District:** No  
**Site Property Class:** 436 - Self carwash  
**Zoning Code:** 01  
**Neighborhood Code:** 00004

**Land Assessment:** 2008 - \$33,000  
**Total Acreage/Size:** 1.00  
**Full Market Value:** 2008 - \$205,578  
**Deed Book:** 1129  
**Grid East:** 790946

**Total Assessment:** 2008 - \$185,000  
**School District:** Union Springs  
**Legal Property Desc:**  
**Deed Page:** 222  
**Grid North:** 1040998

### Owners

Nation Of New York Cayuga  
 P.O. Box 786  
 Seneca Falls NY 13148

### Sales

Sale Date	Price	Property Class	Sale Type	Prior Owner	Value Usable	Arms Length	Addl. Parcels	Deed Book	Deed Page
4/28/2003	\$1,310,000	436 - Self carwash	Land & Building	Bep Properties Inc	Yes	Yes	Yes	1129	222
4/22/2003	\$1,310,000	436 - Self carwash	Land & Building	Rerob Llc	Yes	Yes	Yes	1129	100
10/8/2002	\$185,000	436 - Self carwash	Land & Building	Martens, Maxine L	Yes	Yes	No	1112	273
10/15/1993	\$2,500	436 - Self carwash	Land Only	Gable, Frederick	Yes	No	No	880	159

### Utilities

**Sewer Type:** Comm/public  
**Utilities:** Gas & elec

**Water Supply:** Comm/public

---

## Inventory

<b>Overall Eff Year Built:</b>	0	<b>Overall Condition:</b>	Normal
<b>Overall Grade:</b>	Average	<b>Overall Desirability:</b>	3

---

## Buildings

AC%	Sprinkler%	Alarm%	Elevators	Basement Type	Year Built	Condition	Quality	Gross Floor Area (sqft)	Stories
0	0	0	0	0	1994	Normal	Average	1800	1.00

---

## Site Uses

Use	Rentable Area (sqft)	Total Units
Slf-srv cwsh	1,800	3

---

## Improvements

Structure	Size	Grade	Condition	Year
-----------	------	-------	-----------	------

---

## Land Types

Type	Size
Primary	1.00 acres

---

## Special Districts for 2008

Description	Units	Percent	Type	Value
East Cayuga Res whol	0	0		0
Springport vill fire	0	0		0

---

## Exemptions

Year	Description	Amount	Exempt %	Start Yr	End Yr	V Flag	H Code	Own %
------	-------------	--------	----------	----------	--------	--------	--------	-------



## Property Description Report For: 299 Cayuga St, Municipality of Union Springs



**Status:** Active  
**Roll Section:** Taxable  
**Swis:** 055401  
**Tax Map ID #:** 134.17-1-1.121  
**Property Class:** 432 - Gas station  
**Site:** COM 1  
**In Ag. District:** No  
**Site Property Class:** 432 - Gas station  
**Zoning Code:** 01  
**Neighborhood Code:** 00004

**Land Assessment:** 2008 - \$32,700  
**Total Acreage/Size:** 135 x 317  
**Full Market Value:** 2008 - \$1,250,139  
**Deed Book:** 1129  
**Grid East:** 790983

**Total Assessment:** 2008 - \$1,125,000  
**School District:** Union Springs  
**Legal Property Desc:**  
**Deed Page:** 222  
**Grid North:** 1040872

### Owners

Nation Of New York Cayuga  
 P.O. Box 786  
 Seneca Falls NY 13148

### Sales

Sale Date	Price	Property Class	Sale Type	Prior Owner	Value Usable	Arms Length	Addl. Parcels	Deed Book	Deed Page
4/28/2003	\$1,310,000	432 - Gas station	Land & Building	Rebob Llc	Yes	Yes	Yes	1129	222
4/22/2003	\$1,310,000	432 - Gas station	Land & Building	Rebob Llc	Yes	Yes	Yes	1129	100
7/11/1997	\$3,000	432 - Gas station	Land Only	Gable Frederick-Kenneth	Yes	Yes	No	964	12

### Utilities

**Sewer Type:** Comm/public  
**Utilities:** Gas & elec  
**Water Supply:** Comm/public

## Inventory

<b>Overall Eff Year Built:</b>	0	<b>Overall Condition:</b>	Normal
<b>Overall Grade:</b>	Average	<b>Overall Desirability:</b>	3

## Buildings

AC%	Sprinkler%	Alarm%	Elevators	Basement Type	Year Built	Condition	Quality	Gross Floor Area (sqft)	Stories
100	100	100	0	0	1999	Good	Above Average	2480	1.00

## Site Uses

Use	Rentable Area (sqft)	Total Units
High vol gas	2,480	0

## Improvements

Structure	Size	Grade	Condition	Year
Tank-undgrn	8,000 sq ft	Average	Normal	1998
Canpy-roof	3,336 sq ft	Good	Good	1998
Shed-finishd	12 x 14	Good	Good	2000

## Land Types

Type	Size
Primary	0.98 acres

## Special Districts for 2008

Description	Units	Percent	Type	Value
East Cayuga Res whol	0	0		0
Springport vill fire	0	0		0

## Exemptions

Year	Description	Amount	Exempt %	Start Yr	End Yr	V Flag	H Code	Own %
------	-------------	--------	----------	----------	--------	--------	--------	-------

**APPENDIX D**  
**REGULATORY RECORDS REVIEW**



# **T**OXICS TARGETING

## **PHASE I**

### **ENVIRONMENTAL DATABASE REPORT**

**UNION SPRINGS - CAYUGA STREET**

**UNION SPRINGS, NY 13160**

**FEBRUARY 20, 2009**

## **LIMITED WARRANTY AND DISCLAIMER OF LIABILITY**

### **Who is Covered**

This limited warranty is extended by Toxics Targeting, Inc. only to the original purchaser of the accompanying Environmental Report ("Report"). It may not be assigned to any other person.

### **What is Warranted**

Toxics Targeting, Inc. warrants that it uses reasonable care to accurately transcribe the information contained in this Report from the sources from which it is obtained. This limited warranty is in lieu of all other express warranties which might otherwise arise with respect to the Report. No one is authorized to change or add to this limited warranty.

### **What We Will Do**

If during the warranty period there is shown to be a material error in the transcription of the information contained in this Report from the sources from which it was obtained, Toxics Targeting, Inc. shall refund to the original purchaser the full purchase price paid for the Report. The remedy stated above is the exclusive remedy extended to the Purchaser by Toxics Targeting, Inc. for any failure of the Report to conform with this Warranty, or otherwise for breach of this Warranty or any other warranty, whether expressed or implied.

### **What We Won't Cover**

Toxics Targeting, Inc. has not and can not verify the accuracy, correctness or completion of the information contained in this Report. Information is obtained from government agencies, site owners, and other sources, and errors are common in such information. Because Toxics Targeting, Inc. can not control the accuracy of the information contained in this Report, or the uses which may be made of the information, TOXICS TARGETING, INC. DISCLAIMS LIABILITY TO ANYONE FOR ANY EVENTS ARISING OUT OF THE USE OF THE INFORMATION. TOXICS TARGETING, INC. SHALL NOT BE LIABLE FOR ANY DAMAGE CAUSED BY THIS REPORT, WHETHER DIRECT OR INDIRECT, AND WHETHER OR NOT TOXICS TARGETING, INC. HAS BEEN ADVISED OF OR HAS KNOWLEDGE OF THE POSSIBILITY OF SUCH DAMAGES. TOXICS TARGETING, INC. EXPRESSLY DISCLAIMS ANY AND ALL IMPLIED WARRANTIES OF MERCHANTABILITY OR FITNESS FOR A PARTICULAR USE. Some jurisdictions do not allow the exclusion or limitation of incidental or consequential damages, so the above exclusion or limitation may not apply to you.

### **Period of Warranty**

The period of warranty coverage is ninety days from the date of purchase of this Report. There shall be no warranty after the period of coverage. ANY AND ALL IMPLIED WARRANTIES OF MERCHANTABILITY OR FITNESS FOR PARTICULAR USE SHALL HAVE NO GREATER DURATION THAN THE PERIOD OF WARRANTY STATED HERE, AND SHALL TERMINATE AUTOMATICALLY UPON THE EXPIRATION OF SUCH PERIOD. Some jurisdictions do not allow limitations on how long an implied warranty lasts, so the above exclusion or limitation may not apply to you.

**PLEASE REFER TO PAGES ONE AND FOUR FOR A DESCRIPTION OF SOME OF THE LIMITATIONS OF THIS ENVIRONMENTAL REPORT.**

# Table of Contents

## **Introduction..... 1**

- *The Three Sections of Your Report*
- *How to Use Your Report*
- *Toxic Site Databases Analyzed In Your Report*
- *Limitations Of the Information In Your Report*

## **Section One: Your Report Summary..... 6**

- *Table One: Number of Identified Toxic Sites By Distance Interval*
- *Table Two: Identified Toxic Sites By Direction*
- *Table Three: Identified Toxic Sites By Category*
- *Table Four: Identified Toxic Sites By Proximity*
- *Map One: One-Mile Radius Map*
- *Map Two: Half-Mile Radius Map*
- *Map Three: Quarter-Mile Radius Map*
- *Map Four: Quarter-Mile Radius Close-up Map*

## **Section Two: Toxic Site Profiles**

## **Section Three: Appendices**

- *USEPA ERNS Check*
- *Unmappable Sites*
- *Hazardous Waste Codes*
- *How Toxic Sites Are Mapped*
- *Information Source Guide*

## ***Introduction***

*Toxics Targeting* has combined environmental database searches, extensive regulatory analysis and sophisticated mapping techniques to produce your *Environmental Report*. It checks for the presence of 21 categories of government-reported toxic sites and provides detailed, up-to-date information on each identified site. The findings of your report are presented in an easy-to-understand format that:

1. ***Maps*** the approximate locations of selected government-reported toxic sites identified on or near a specified target address.
2. ***Estimates*** the distance and direction between the target address and each identified toxic site.
3. ***Reports*** air and water permit non-compliance and other regulatory violations.
4. ***Profiles*** some aspects of the usage, manufacture, storage, handling, transport or disposal of toxic chemicals at individual sites.
5. ***Summarizes*** some potential health effect information and drinking water standards for selected chemicals reported at individual sites.

## ***The Three Sections Of Your Report***

The first section highlights your report's findings by summarizing identified sites according to: **a)** distance intervals, **b)** direction, **c)** proximity to the target address and **d)** individual site categories. In addition, the locations of all identified toxic sites are illustrated on individual maps for each radius search distance used in your report. A close-up map illustrates the locations of all identified toxic sites, at the shortest radius search distance used in your report. Finally, a map of tax parcels and a table of selected information about those parcels are included.

The second section of your report contains *Toxic Site Profiles* that provide detailed information on each identified toxic site. The information in each *Toxic Site Profile* varies according to its source. Some toxic site categories have extensive information, some have limited information. All the information is updated on a regular basis.

The third section of the report contains appendices that identify: **1)** on-site spills reported to the national Emergency Response Notification System (ERNS), **2)** various toxic sites that cannot be mapped due to incomplete or erroneous addresses or other mapping problems, **3)** codes that characterize hazardous wastes reported at various facilities, **4)** methods used to map toxic sites identified in your report and **5)** information sources used in your report.

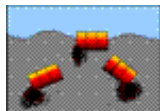
## ***How to Use Your Report***

- Check Table One to see the number of identified sites by distance intervals.
- Check Table Two to see identified sites sorted by direction.
- Check Table Three to see identified sites sorted by site categories.
- Check Table Four to see identified sites ranked by proximity to the target address.
- Use Table Five to get info for the subject parcel and every parcel found on the Tax Parcel Map
- Refer to the various maps to see the locations of identified toxic sites. Refer to the *Toxic Site Profile* and *Appendix* sections for additional information.

# Toxic Site Databases Analyzed In Your Report

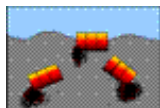
## Search Radius

One-Mile



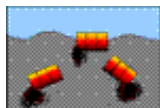
1) ***National Priority List for Federal Superfund Cleanup***: a listing of sites known to pose environmental or health hazards that are being investigated or cleaned up under the Federal Superfund program.

Half-Mile



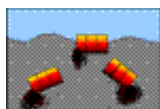
2) ***Delisted National Priority List Sites***: a listing of NPL sites that have been removed from the National Priority List.

One-Mile



3) ***New York Inactive Hazardous Waste Disposal Site Registry***: a state listing of sites that can pose environmental or public health hazards requiring investigation or clean up.

One-Mile



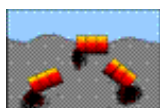
4) ***New York Inactive Hazardous Waste Disposal Site Registry Qualifying***: a state listing of sites that qualify for possible inclusion to the NYDEC Inactive Haz. Waste Disposal Site Registry.

One-Mile



5) ***RCRA Corrective Action Activity (CORRACTS)***: waste facilities with RCRA corrective action activity reported by the USEPA.

Half-Mile



6) ***CERCLIS*** (Comprehensive Environmental Response, Compensation and Liability Information System): a federal listing of Non-NFRAP sites that can pose environmental or public health hazards requiring investigation or clean up.

Half-Mile



7) ***CERCLIS NFRAP***: a federal listing of CERCLIS sites that have no further remedial action planned.

Half-Mile



8) ***New York State Brownfield Cleanup Sites***: a listing of sites that are abandoned, idled or under-used industrial and commercial sites where expansion or redevelopment is complicated by real or perceived environmental contamination.

Half-Mile



9) ***New York Solid Waste Facilities Registry***: active and inactive landfills, incinerators, transfer stations or other solid waste management facilities.

Half-Mile



10) ***New York and Federal Hazardous Waste Treatment, Storage or Disposal Facilities***: sites reported by the NYS manifest system and the USEPA's Resource Conservation and Recovery Act Information System (RCRIS). Also includes the following database:

- ***RCRA violations***: waste facilities with violations reported by the USEPA pursuant to the Resource Conservation and Recovery Act..

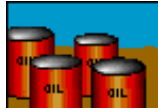
Half-Mile



11) ***Toxic Spills: active and inactive or closed*** spills reported to state environmental authorities, including *remediated* and *unremediated* leaking underground storage tanks. This database includes the following categories:

- Tank Failures
- Tank Test Failures
- Unknown Spill Cause or Other Spill Causes
- Miscellaneous Spill Causes

Quarter-Mile



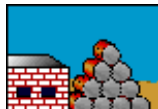
12) ***New York State Major Oil Storage Facilities:*** sites with more than a 400,000-gallon capacity for storing petroleum products.

Quarter-Mile



13) ***New York and Local Petroleum Bulk Storage Facilities:*** sites with more than a 1,100-gallon capacity for storing petroleum products.

Quarter-Mile



14) ***New York and Federal Hazardous Waste Generators and Transporters:*** sites reported by the NYS manifest system and the USEPA's Resource Conservation and Recovery Act Information System (RCRA). Also includes the following database:

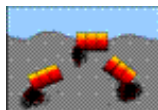
- ***RCRA violations:*** waste facilities with violations reported by the USEPA pursuant to the Resource Conservation and Recovery Act.

Quarter-Mile



15) ***New York Chemical Bulk Storage Facilities:*** sites storing hazardous substances listed in 6 NYCRR Part 597 in aboveground tanks with capacities of 185 gallons or more and/or underground tanks of any size

Half-Mile



16) ***New York Hazardous Substance Disposal Site Draft Study:*** a state listing of sites contaminated with toxic substances that can pose environmental or public health hazards. These sites are not eligible for state clean up funding programs.

Quarter-Mile



17) ***Federal Toxic Release Inventory Facilities:*** discharges of selected toxic chemicals to air, land, water or treatment facilities.

Quarter-Mile



18) ***Federal Air Discharges:*** Air pollution point sources monitored by U.S. EPA and/or state and local air regulatory agencies.

Quarter-Mile



19) ***Federal Permit Compliance System Toxic Wastewater Discharges:*** permitted toxic wastewater discharges.

Quarter-Mile



20) ***Federal Civil and Administrative Enforcement Docket:*** judiciary cases filed on behalf of the U. S. Environmental Protection Agency by the Department of Justice.

Property only



21) ***ERNS: Federal Emergency Response Notification System Spills:*** a listing of federally reported spills.

## *Limitations Of The Information In Your Report*

The information presented in your *Environmental Report* has been obtained from various local, state and federal government agencies. Please be aware that: **1)** additional information on individual sites may be available, **2)** newly discovered sites are continually reported and **3)** all map locations are approximate. As a result, this report is intended to be the **FIRST STEP** in the process of identifying and evaluating possible environmental threats to specific properties and can only serve as a guide for conducting on-site visits or additional, more detailed toxic hazard research.

*Toxics Targeting* tries to ensure that the information in your report is presented accurately and with minimal alteration. The only systematic changes that are made correct obvious address errors in order to allow sites to be mapped. Any address changes that are made are noted in the map information section at the top of each corresponding *Toxic Site Profile*. Since the information presented in your report is not edited, please be aware that it can contain reporting errors or typographical mistakes made by the site owners/operators or government agencies that produced the information. Please be aware of some other limitations of the information in your report:

- The map used by *Toxics Targeting* is the same one used by the U. S. Census. While the map is generally accurate, no map is perfect. In addition, *Toxics Targeting's* mapping methods estimate where toxic site addresses are located if the address is not specifically designated on the Census map. **FOR THESE REASONS, ALL MAP LOCATIONS OF ADDRESSES AND REPORTED TOXIC SITES SHOULD BE CONSIDERED APPROXIMATE AND SHOULD BE VERIFIED BY ON-SITE VISITS;**
- **UNDISCOVERED, UNREPORTED OR UNMAPPABLE TOXIC SITES MIGHT NOT BE IDENTIFIED BY THIS REPORT'S CHECK OF 21 TOXIC SITE CATEGORIES. TOXIC SITES REPORTED IN OTHER GOVERNMENT DATABASES MIGHT ALSO EXIST. FOR THESE REASONS, YOUR REPORT MIGHT NOT IDENTIFY ALL THE TOXIC SITES THAT EXIST IN THE AREA IT SEARCHES;**
- The appendix of your report contains a listing of sites that could not be mapped due to incomplete or erroneous address information or other mapping problems. This listing includes unmappable toxic sites in zip code areas within one mile of the target address as well as toxic sites without zip codes reported in the same county. **IF YOU WOULD LIKE INFORMATION ON ANY OF THE LISTED SITES, PLEASE CONTACT TOXICS TARGETING AND REFER TO THE SITE ID NUMBER.**
- Some toxic sites identified in your report may be classified as **known hazards**. Most of the toxic sites identified in your report involve **potential hazards** related to the on-site use, manufacture, handling, storage, transport or disposal of toxic chemicals. Some of the toxic sites identified in your report may be the addresses of parties responsible for toxic sites located elsewhere. **YOU SHOULD ONLY CONCLUDE THAT TOXIC HAZARDS ACTUALLY EXIST AT A SPECIFIC SITE WHEN GOVERNMENT AUTHORITIES MAKE THAT DETERMINATION OR WHEN THAT CONCLUSION IS FULLY DOCUMENTED BY THE FINDINGS OF AN APPROPRIATE SITE INVESTIGATION UNDERTAKEN BY LICENSED PROFESSIONALS;**
- Compass directions and distances are approximate. Compass directions are calculated from the subject property address to the mapped location of each identified toxic site. The compass direction does not necessarily refer to the closest property boundary of an identified toxic site. The compass direction also can vary substantially for toxic sites that are located very close to the subject property address.
- The information presented in your report is a summary of the information that *Toxics Targeting* obtains from government agencies on reported toxic sites. **YOU MAY BE ABLE TO OBTAIN ADDITIONAL INFORMATION ABOUT REPORTED SITES WITH THE FREEDOM OF INFORMATION REQUEST FORM LETTERS THAT ARE PROVIDED ON THE INSIDE OF THE BACK COVER.**



# Section One:

## Report Summary

- *Table One: Number of Identified Toxic Sites By Distance Interval*
- *Table Two: Identified Toxic Sites By Direction*
- *Table Three: Identified Toxic Sites By Category*
- *Table Four: Identified Toxic Sites By Proximity*
- *Map One: One-Mile Radius Map*
- *Map Two: Half-Mile Radius Map*
- *Map Three: Quarter-Mile Radius Map*
- *Map Four: Quarter-Mile Radius Close up Map*

## NUMBER OF IDENTIFIED SITES BY DISTANCE INTERVAL

Database Searched	0 - 100 ft	100 ft - 1/8 mi	1/8 mi - 1/4 mi	1/4 mi - 1/2 mi	1/2 mi - 1 mi	Site Category Totals
<b>ASTM-Required 1 Mile Search</b>						
National Priority List (NPL) Sites	0	0	0	0	0	0
NYS Inactive Hazardous Waste Disposal Site Registry	0	0	0	0	0	0
NYS Inactive Haz Waste Disposal Site Registry Qualifying	0	0	0	0	0	0
RCRA Corrective Action (CORRACTS) Sites	0	0	0	0	0	0
<b>ASTM-Required 1/2 Mile Search</b>						
Delisted National Priority List (NPL) Sites	0	0	0	0	Not searched	0
CERCLIS Superfund Non-NFRAP Sites	0	0	0	0	Not searched	0
CERCLIS Superfund NFRAP Sites	0	0	0	0	Not searched	0
Brownfields Sites						
Voluntary Cleanup Program	0	0	0	0	Not searched	0
Environmental Restoration Program	0	0	0	0	Not searched	0
Brownfield Cleanup Program	0	0	0	0	Not searched	0
NYSDEC Solid Waste Facilities / Landfills	0	0	0	0	Not searched	0
RCRA Hazardous Waste Treatment, Storage, Disposal Sites	0	0	0	0	Not searched	0
NYS Toxic Spills						
Active Tank Failures	0	0	0	0	Not searched	0
Active Tank Test Failures	0	0	0	0	Not searched	0
Active Spills - Unknown / Other Causes	0	0	0	0	Not searched	0
Active Spills - Miscellaneous Causes	0	0	0	0	Not searched	0
Closed Tank Failures	1	0	0	0	Not searched	1
Closed Tank Test Failures	0	0	0	0	Not searched	0
Closed Spills - Unknown / Other Causes	1	3	1	0	Not searched	5
Closed Spills - Miscellaneous Causes	1	0	0	0(1)	Not searched	1(1)
<b>ASTM-Required Property &amp; Adjacent Property (1/4 Mile Search)</b>						
NYS Major Oil Storage Facilities	0	0	0	Not searched	Not searched	0
Local & State Petroleum Bulk Storage Sites	1	0	0	Not searched	Not searched	1
RCRA Hazardous Waste Generators & Transporters	0	0	0	Not searched	Not searched	0
NYS Chemical Bulk Storage Sites	0	0	0	Not searched	Not searched	0
Emergency Response Notification System (ERNS)	0	Not searched	Not searched	Not searched	Not searched	0
Institutional Controls / Engineering Controls (IC/EC)	See databases for NPL, CERCLIS, Inactive Hazardous Waste Disposal Site Registry and Brownfield Sites.					
<b>ASTM-Required Databases Distance Interval Totals</b>	<b>4</b>	<b>3</b>	<b>1</b>	<b>0(1)</b>	<b>0</b>	<b>8(1)</b>

Numbers in ( ) indicate spills not mapped and profiled in this report, and are listed at the end of the active and closed spills sections. See these lists for a description of the parameters involved with identifying these spills.

NOTE: Table continues on next page.

**Non-ASTM Databases 1/2 Mile Search**

Hazardous Substance Waste Disposal Sites	0	0	0	0	Not searched	0
--	---	---	---	---	--------------	---

**Non-ASTM Databases 1/4 Mile Search**

Toxic Release Inventory Sites (TRI)	0	0	0	Not searched	Not searched	0
Permit Compliance System (PCS) Toxic Wastewater Discharges	0	0	0	Not searched	Not searched	0
Air Discharges	0	0	0	Not searched	Not searched	0
Civil & Administrative Enforcement Docket Facilities	0	0	0	Not searched	Not searched	0

---

<b>Non-ASTM Databases Distance Interval Totals</b>	<b>0</b>	<b>0</b>	<b>0</b>	<b>0</b>	<b>Not Searched</b>	<b>0</b>
--	----------	----------	----------	----------	---------------------	----------

---

<b><i>Distance Interval Totals</i></b>	<b><i>4</i></b>	<b><i>3</i></b>	<b><i>1</i></b>	<b><i>0(1)</i></b>	<b><i>0</i></b>	<b><i>8(1)</i></b>
--	-----------------	-----------------	-----------------	--------------------	-----------------	--------------------

Numbers in ( ) indicate spills not mapped and profiled in this report, and are listed at the end of the active and closed spills sections. See these lists for a description of the parameters involved with identifying these spills.

# Identified Toxic Sites by Direction

## Union Springs - Cayuga Street Union Springs, NY 13160

\* Compass directions can vary substantially for sites located very close to the subject property address.

### Sites less than 100 feet from subject property sorted by distance

Map Id#	Site Name	Site Street	Approximate Distance & Direction From Property	Toxic Site Category
1	EXPRESS MART	299 CAYUGA ST	0 feet	Closed Status Tank Failure
2	EXPRESS MART 311	299 CAYUGA STREET	0 feet	Closed Status Spill (Unk/Other Cause)
7	EXPRESS MART	299 CAYUGA ST	0 feet	Closed Status Spill (Misc. Spill Cause)
8	LAKESIDE TRADING	RT. 90	0 feet	Petroleum Bulk Storage Site

### Sites between 100 ft and 660 ft from the subject property sorted by direction and distance

Map Id#	Site Name	Site Street	Approximate Distance & Direction From Property	Toxic Site Category
3	UNION SPRINGS MOBIL	RT 326 & RT 90	458 feet to the NE	Closed Status Spill (Unk/Other Cause)
4	UNION SPRINGS FUMES	RTE 326 & RTE 90	458 feet to the NE	Closed Status Spill (Unk/Other Cause)
5	HYDRAULIC OIL	RT 90 & RT 326	458 feet to the NE	Closed Status Spill (Unk/Other Cause)

### Sites equal to or greater than 660 ft from subject property sorted by direction and distance

Map Id#	Site Name	Site Street	Approximate Distance & Direction From Property	Toxic Site Category
6	UNION SPRINGS CENTRAL SCH	239 CAYUGA STREET	1050 feet to the SE	Closed Status Spill (Unk/Other Cause)

# Identified Toxic Sites by Category

## Union Springs - Cayuga Street Union Springs, NY 13160

\* Compass directions can vary substantially for sites located very close to the subject property address.

Closed Status Tank Failures -- Total Sites - 1			Database searched at 1/2 MILE - ASTM required search distance: 1/2 Mile	
MAP ID	FACILITY ID	FACILITY NAME	FACILITY STREET	DISTANCE & DIRECTION
1	0102901	EXPRESS MART	299 CAYUGA ST	0 feet
Closed Status Spills (Unknown Causes & Other Causes) -- Total Sites - 5			Database searched at 1/2 MILE - ASTM required search distance: 1/2 Mile	
MAP ID	FACILITY ID	FACILITY NAME	FACILITY STREET	DISTANCE & DIRECTION
2	0060020	EXPRESS MART 311	299 CAYUGA STREET	0 feet
3	9012938	UNION SPRINGS MOBIL	RT 326 & RT 90	458 feet to the NE
4	8902903	UNION SPRINGS FUMES	RTE 326 & RTE 90	458 feet to the NE
5	8804574	HYDRAULIC OIL	RT 90 & RT 326	458 feet to the NE
6	0400475	UNION SPRINGS CENTRAL SCH	239 CAYUGA STREET	1050 feet to the SE
Closed Status Spills (Miscellaneous Spill Causes) -- Total Sites - 1			Database searched at 1/2 MILE - ASTM required search distance: 1/2 Mile	
MAP ID	FACILITY ID	FACILITY NAME	FACILITY STREET	DISTANCE & DIRECTION
7	0107937	EXPRESS MART	299 CAYUGA ST	0 feet
Petroleum Bulk Storage Sites -- Total Sites - 1			Database searched at 1/4 MILE - ASTM required search distance: Property & Adjacent	
MAP ID	FACILITY ID	FACILITY NAME	FACILITY STREET	DISTANCE & DIRECTION
8	7-186503	LAKESIDE TRADING	RT. 90	0 feet

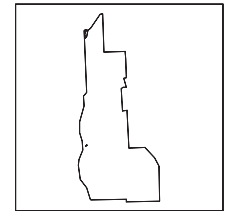
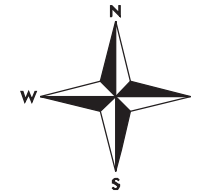
# Identified Toxic Sites by Proximity

## Union Springs - Cayuga Street, Union Springs, NY 13160

\* Compass directions can vary substantially for sites located very close to the subject property address.

Map Id#	Site Name	Site Street	Approximate Distance & Direction From Property	Toxic Site Category
1	EXPRESS MART	299 CAYUGA ST	0 feet	Closed Status Tank Failure
2	EXPRESS MART 311	299 CAYUGA STREET	0 feet	Closed Status Spill (Unk/Other Cause)
7	EXPRESS MART	299 CAYUGA ST	0 feet	Closed Status Spill (Misc. Spill Cause)
8	LAKESIDE TRADING	RT. 90	0 feet	Petroleum Bulk Storage Site
3	UNION SPRINGS MOBIL	RT 326 & RT 90	458 feet to the NE	Closed Status Spill (Unk/Other Cause)
4	UNION SPRINGS FUMES	RTE 326 & RTE 90	458 feet to the NE	Closed Status Spill (Unk/Other Cause)
5	HYDRAULIC OIL	RT 90 & RT 326	458 feet to the NE	Closed Status Spill (Unk/Other Cause)
6	UNION SPRINGS CENTRAL SCH	239 CAYUGA STREET	1050 feet to the SE	Closed Status Spill (Unk/Other Cause)

# Toxics Targeting 1 Mile Buffer Search Map Union Springs - Cayuga Street Union Springs, NY 13160



Cayuga County



National Priority  
List (NPL)



Inactive Hazardous Waste  
Disposal Registry Site



Inact. Haz Waste Disp.  
Registry Qualifying



RCRA Corrective  
Action Facility



Subject  
Area



Waterbody



County  
Border



Railroad  
Tracks



1 Mile  
Radius



1/2 Mile  
Radius



1/4 Mile  
Radius

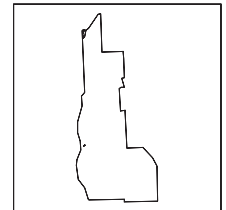
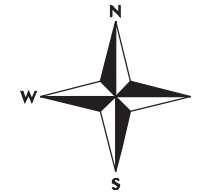


1/8 Mile  
Radius



Scale: 1 inch = 1978 feet

# Toxics Targeting 1/2 Mile Buffer Search Map Union Springs - Cayuga Street Union Springs, NY 13160



Cayuga County

- CERCLIS Superfund Non-NFRAP Site
- Delisted NPL Site
- CERCLIS Superfund NFRAP Site
- Hazardous Waste Treater, Storer, Disposer
- Hazardous Substance Waste Disposal Site
- Solid Waste Facility
- Brownfields Site
- Hazardous Material Spill

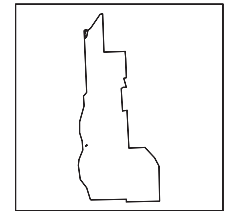
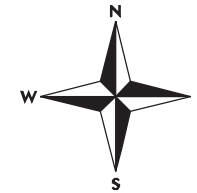
- Subject Area
- Waterbody
- County Border
- Railroad Tracks
- 1 Mile Radius
- 1/2 Mile Radius
- 1/4 Mile Radius
- 1/8 Mile Radius



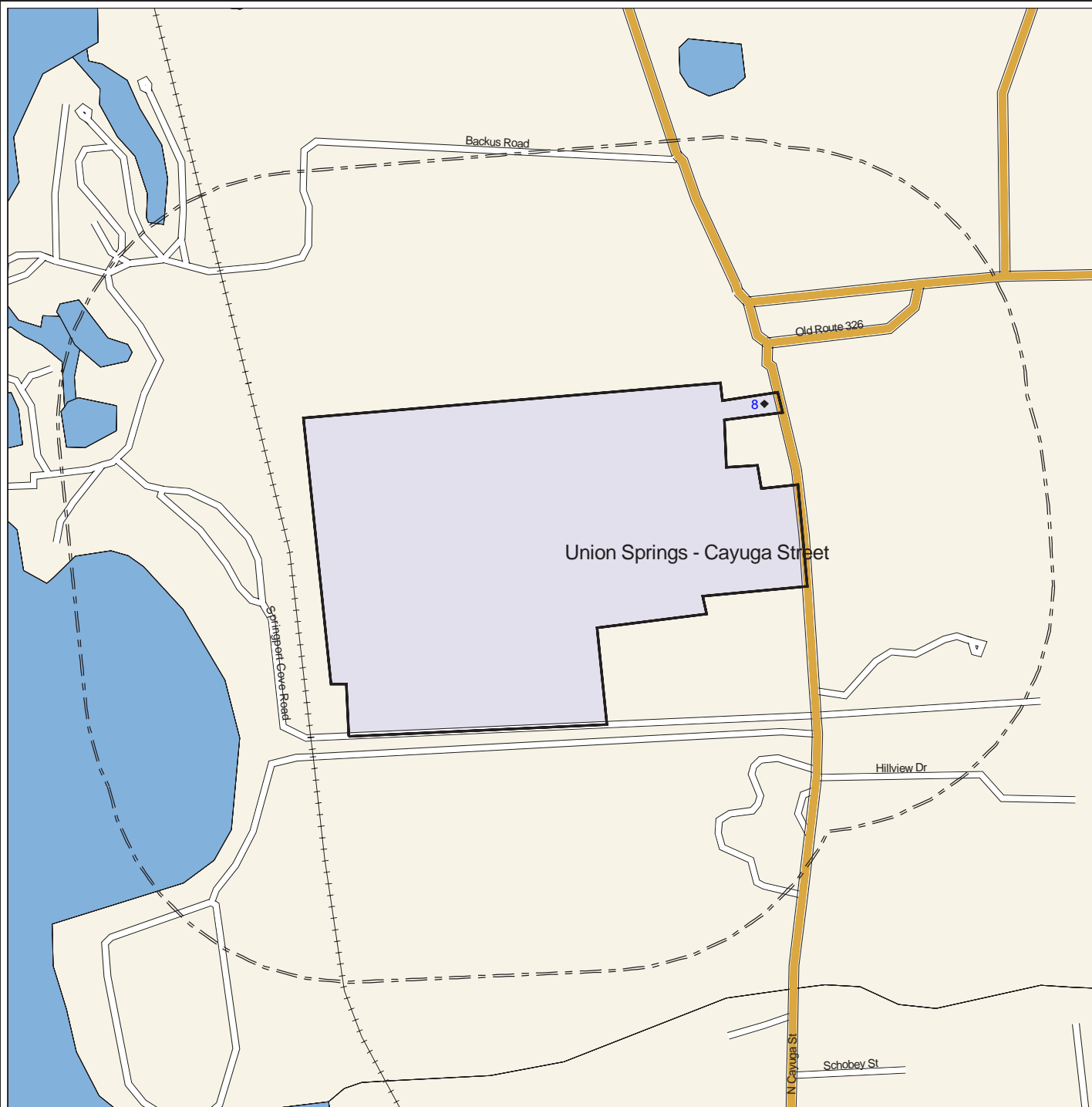
Scale: 1 inch = 1191 feet



# Toxics Targeting 1/4 Mile Buffer Search Map Union Springs - Cayuga Street Union Springs, NY 13160



Cayuga County



- |                            |                                    |
|----------------------------|------------------------------------|
| Major Oil Storage Facility | Enforcement Docket Facility        |
| Chemical Storage Facility  | Air Release                        |
| Toxic Release              | Petroleum Bulk Storage Facility    |
| Wastewater Discharge       | Hazardous Waste Generator, Transp. |
| Subject Area               | Waterbody                          |
| County Border              | Railroad Tracks                    |
| 1/4 Mile Radius            | 1/8 Mile Radius                    |

Scale: 1 inch = 797 feet



## Section Two: Toxic Site Profiles

The heading of each *Toxic Site Profile* refers to the site's map location and details:

- The facility name, address, city, state, and zip code (This information does not appear in the headings for Inactive Hazardous Waste Disposal Sites).
- Any changes that were made to a site's address in order to map its location.
- The site mapping method that was used (see ***How Sites are Located***, at the end of this section for more information).

*Toxic Site Profiles* summarize information provided by site owners or operators and government agencies regarding various toxic chemical activities reported at each site, such as:

- Whether chemicals were stored, produced, transported, discharged or disposed of.
- The name of chemicals and their Chemical Abstract Series (CAS) numbers;
- The amount of chemicals and the units (gallons/pounds) the chemical was measured in.
- Whether the site or storage tanks at the site are currently active or inactive.
- Special codes used by government agencies to regulate hazardous waste activities at some sites  
(A complete description of the codes follows the profiles section).

For selected individual chemicals reported at various toxic sites, some potential health effect summary information appears below the site profile. Each potential health effect summary identifies chemicals by name and by Chemical Abstract Series (CAS) Number. An "x" under each potential health effect heading indicates positive toxicity testing results reported by the National Institute of Occupational Safety and Health's Registry of Toxic Effects of Chemical Substances (RTECS). Some chemicals (mostly appearing in profiles of Hazardous Waste facilities), are reported as mixtures, and RTECS health effect information is only available for individual chemicals. In addition, RTECS only provides information on approximately 100,000 common chemicals. Consequently, the absence of potential health effect summary information for a particular chemical identified in a Toxic Site Profile does not necessarily mean that the chemical does not pose potential health effects.

The Maximum Contaminant Level (MCL) in drinking water allowed for selected chemicals is also noted. In most cases, the only applicable MCL has been set by the New York State Department of Health (NYSDOH). Where NYSDOH has not set an MCL, the federal standard, if one exists, is listed and is marked by an asterisk.

Presented below are column headings that describe the health effect definitions used in RTECS and applicable New York State and federal drinking water standards. Reference sources for information presented in this section are also provided.

ACUTE TOX: **Acute Toxicity:** Short-term exposure to this chemical can cause lethal and non-lethal toxicity effects not included in the following four categories.

TUMOR TOX: **Tumorigenic Toxicity:** The chemical can cause an increase in the incidence of tumors.

MUTAG TOX: **Mutagenic Toxicity:** The chemical can cause genetic alterations that are passed from one generation to the next.

REPRO TOX: **Reproductive toxicity:** May signify one of the following effects: maternal effects, paternal effects, effects on fertility, effects on the embryo or fetus, specific developmental abnormalities, tumorigenic effects, or effects on the newborn (only positive reproductive effects data for mammalian species are referenced)

IRRIT TOX: **Primary Irritant:** The chemical can cause eye or skin irritation

MCL: **Drinking Water Standard - Maximum Contaminant Level** (MCL) listed under Drinking Water Supplies, 10 NYCRR Part 5, Subparts 1.51(f),(g), and (h) for NYDOH MCL's and under the Safe Drinking Water Act, 40 CFR 141, Subparts B and G, (\* indicates value for total trihalomethanes) for federal MCL's.

Reference Source for Toxicity Information: Registry of Toxic Effects of Chemical Substances (RTECS), NIOSH (on-line database); For further information, contact: NIOSH, 4676 Columbia Parkway, Cincinnati, OH, 45226, 800/35-NIOSH.

Reference Source for Drinking Water Standards: New York State Department of Health, Bureau of Toxic Substances Assessment, 2 University Place, Room 240, Albany, NY 12203, 518/458-6373.

U.S. Environmental Protection Agency, Office of Drinking Water, 401 M St SW, Mailstop WH-556, Washington, DC, 20460, 202/260-5700.

Inactive Hazardous Waste Disposal Site Classifications: 1 -- Causing or presenting an imminent danger of causing irreversible or irreparable damage to the public health or the environment -- immediate action required;

2 -- Significant threat to the public health or environment -- action required;

3 -- Does not Present a significant threat to the environment or public health -- action may be deferred;

4 -- Site properly closed --requires continued management;

5 -- Site properly closed, no evidence of present or potential adverse impact -- no further action required;

2a -- This temporary classification has been assigned to sites where there is inadequate data to assign them to the five classifications specified by law.

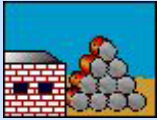
D1, 2, 3 -- Delisted Site (1: hazardous waste not found; 2: remediated; 3: consolidated site or site incorrectly listed)



***NO NATIONAL PRIORITIES LIST (NPL) SITES IDENTIFIED WITHIN 1 MILE SEARCH RADIUS***



***NO INACTIVE HAZ WASTE DISPOSAL REGISTRY OR REGISTRY-QUALIFYING SITES IDENTIFIED WITHIN 1 MILE SEARCH RADIUS***



***NO RCRA CORRECTIVE ACTION SITES IDENTIFIED WITHIN 1 MILE SEARCH RADIUS***



***NO CERCLIS SUPERFUND SITES IDENTIFIED WITHIN 1/2 MILE SEARCH RADIUS***

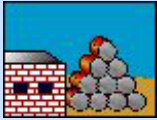




***NO BROWNFIELD SITES IDENTIFIED WITHIN 1/2 MILE SEARCH RADIUS***



***NO SOLID WASTE FACILITIES IDENTIFIED WITHIN 1/2 MILE SEARCH RADIUS***



***NO HAZARDOUS WASTE TREATMENT/STORAGE/DISPOSERS IDENTIFIED WITHIN THE 1/2 MILE SEARCH RADIUS***



## ***HAZARDOUS MATERIAL SPILLS INTRODUCTION***

The Hazardous Material Spills in this section are divided into eight spill cause groupings. These include:

Active Spills Section: Spills with incomplete paperwork that may or may not be cleaned up (See Date Cleanup Ceased)

- 1) Tank Failures
- 2) Tank Test Failures
- 3) Unknown Spill Cause or Other Spill Cause Hazardous Spills
- 4) Miscellaneous Spill Causes: Equipment Failure, Human Error, Tank Overfill, Deliberate Spill, Traffic Accidents, Housekeeping, Abandoned Drum, and Vandalism.

Closed Status Spills Section: Spills with completed paperwork that may or may not be cleaned up (See Date Cleanup Ceased)

- 5) Tank Failures
- 6) Tank Test Failures
- 7) Unknown Spill Cause or Other Spill Cause Hazardous Spills
- 8) Miscellaneous Spill Causes: Equipment Failure, Human Error, Tank Overfill, Deliberate Spill, Traffic Accidents, Housekeeping, Abandoned Drum, and Vandalism.

All spills within each spill cause category are presented in order of proximity to the subject site address.

**Please note that spills reported within 0.25 mile (or one-eighth mile in New York City) are mapped and profiled.**

**Between 0.25 mile (or one-eighth mile in New York City) and 0.5 mile, only the following spills are mapped and profiled:**

- \* Tank Failures;
- \* Tank Test Failures;
- \* Unknown Spill Cause or Other Spill Cause;
- \* Spills greater than 100 units of quantity; and
- \* Spills reported in the NYSDEC Fall 1998 MTBE Survey.

A table at the end of each section presents a listing of reported Miscellaneous Spills with less than 100 units located between 0.25 mile (or one-eighth mile in Manhattan) and 0.5 mile. These spills are neither mapped nor profiled.



***NO ACTIVE TANK FAILURES IDENTIFIED WITHIN 1/2 MILE SEARCH RADIUS***



***NO ACTIVE TANK TEST FAILURES IDENTIFIED WITHIN 1/2 MILE SEARCH RADIUS***



***NO ACTIVE UNKNOWN CAUSE SPILLS AND OTHER CAUSE SPILLS IDENTIFIED WITHIN 1/2 MILE SEARCH RADIUS***





***NO ACTIVE HAZARDOUS SPILLS - MISC. SPILL CAUSES - EQUIPMENT FAILURE, HUMAN ERROR, TANK OVERFILL, DELIBERATE SPILL, TRAFFIC ACCIDENT, HOUSEKEEPING, ABANDONED DRUM, AND VANDALISM - IDENTIFIED WITHIN 1/2 MILE SEARCH RADIUS.***

All spills mapped and profiled within 1/4 mile. Between 1/4 mile and 1/2 mile search radius, spills reported to be greater than 100 units and spills reported in the NYSDEC Fall 1998 MTBE Survey are mapped and profiled. Spills reported to be less than 100 units are listed in a table at the end of this section.

**THE FOLLOWING ACTIVE SPILLS FOR THIS CATEGORY WERE REPORTED BETWEEN 1/4 MILE AND 1/2 MILE SEARCH RADIUS FROM THE SUBJECT ADDRESS. THESE SPILLS WERE REPORTED TO BE LESS THAN 100 UNITS IN QUANTITY AND CAUSED BY: EQUIPMENT FAILURE, HUMAN ERROR, TANK OVERFILL, DELIBERATE SPILL, TRAFFIC ACCIDENT, HOUSEKEEPING, ABANDONED DRUM, OR VANDALISM. THESE SPILLS ARE NEITHER MAPPED NOR PROFILED IN THIS REPORT.**

FACILITY ID      FACILITY NAME  
No dropped spills found for this category

STREET

CITY



### **CLOSED STATUS TANK FAILURES IDENTIFIED WITHIN 1/2 MILE SEARCH RADIUS**

Please Note: \* - Compass directions can vary substantially for sites located very close to the subject property address.

**Map Identification Number 1**      **EXPRESS MART**  
299 CAYUGA ST

UNION SPRINGS, NY

**Spill Number: 0102901**

**Close Date: 04/17/2002**  
TT-Id: 520A-0225-738

#### MAP LOCATION INFORMATION

Site location mapped by: MANUAL MAPPING (3)  
Approximate distance from property: 0 feet

#### ADDRESS CHANGE INFORMATION

Revised street: NO CHANGE  
Revised zip code: 13160

Source of Spill: PASSENGER VEHICLE  
Notifier Type: Affected Persons  
Caller Name: PATRICK HYDE  
DEC Investigator: MENASH

Spiller: UNKNOWN  
Notifier Name: JANE GILMORE  
Caller Agency: EXPRESS MART  
Contact for more spill info: JANE GILMORE

Spiller Phone:  
Notifier Phone: (315) 889-3542  
Caller Phone: (315) 415-9115  
Contact Person Phone: (315) 899-3542

Spill Class: KNOWN RELEASE WITH MINIMAL POTENTIAL FOR FIRE OR HAZARD;NO DEC RESPONSE;NO CORRECTIVE ACTION REQUIRED

Spill Date	Date Cleanup Ceased	Cause of Spill	Meets Cleanup Standards		Penalty Recommended	
06/15/2001		TANK FAILURE	NO		NO	
Material Spilled	Material Class	Quantity Spilled	Units	Quantity Recovered	Units	Resource(s) Affected
GASOLINE	PETROLEUM	10.00	GALLONS	10.00	GALLONS	SOIL

#### Caller Remarks:

faulty fuel tank on a customers car - fire dept responded & investigating & will forward the responsible parties info to the caller - spill was to black top & cleaned up w/ speedy dry

#### DEC Investigator Remarks:

Prior to Sept, 2004 data translation this spill Lead\_DEC Field was "MN"



***NO CLOSED STATUS TANK TEST FAILURES IDENTIFIED WITHIN 1/2 MILE SEARCH RADIUS***


**CLOSED STATUS UNKNOWN CAUSE SPILLS AND OTHER CAUSE SPILLS IDENTIFIED WITHIN 1/2 MILE SEARCH RADIUS**

Please Note: \* - Compass directions can vary substantially for sites located very close to the subject property address.

**Map Identification Number 2**      **EXPRESS MART 311**  
299 CAYUGA STREET

UNION SPRINGS, NY

**Spill Number: 0060020**

**Close Date: 10/24/2000**

TT-Id: 520A-0225-739

**MAP LOCATION INFORMATION**

Site location mapped by: MANUAL MAPPING (3)  
Approximate distance from property: 0 feet

**ADDRESS CHANGE INFORMATION**

Revised street: NO CHANGE  
Revised zip code: 13160

Source of Spill: GASOLINE STATION

Notifier Type: Affected Persons

Caller Name: PAT HYDE

DEC Investigator: MENASH

Spiller: NY LICENSE PLATE 778-60AS

Notifier Name: PAT HYDE

Caller Agency: PETRAL

Contact for more spill info: JAMES

Spiller Phone:

Notifier Phone:

Caller Phone: (315) 446-0125

Contact Person Phone: (315) 889-3542

Spill Class: KNOWN RELEASE WITH MINIMAL POTENTIAL FOR FIRE OR HAZARD;DEC RESPONSE;NO CORRECTIVE ACTION REQUIRED

Spill Date	Date Cleanup Ceased	Cause of Spill	Meets Cleanup Standards		Penalty Recommended	
06/08/2000		OTHER	NO		NO	
Material Spilled	Material Class	Quantity Spilled	Units	Quantity Recovered	Units	Resource(s) Affected
GASOLINE	PETROLEUM	5.00	GALLONS	5.00	GALLONS	SOIL

**Caller Remarks:**

ATV FILLED HIS GAS TANK AND SHUT OFF VALVE ON HOSE DID NOT WORK. FIRE DEPT CALLED AND SPEEDI DRY APPLIED AND WILL DISPOSE OF.

**DEC Investigator Remarks:**

Prior to Sept, 2004 data translation this spill Lead\_DEC Field was "MN"

**Map Identification Number 3**      **UNION SPRINGS MOBIL**  
RT 326 & RT 90

UNION SPRINGS, NY

**Spill Number: 9012938****Close Date: 03/20/1991**  
TT-Id: 520A-0225-732

## MAP LOCATION INFORMATION

Site location mapped by: MANUAL MAPPING (3)  
Approximate distance from property: 458 feet to the NE

## ADDRESS CHANGE INFORMATION

Revised street: RT 326 / RT 90  
Revised zip code: 13160

Source of Spill: PASSENGER VEHICLE  
Notifier Type: Responsible Party  
Caller Name: PAT HYDE  
DEC Investigator: ROMOCKI

Spiller: UNK  
Notifier Name:  
Caller Agency: PETRALL  
Contact for more spill info:

Spiller Phone:  
Notifier Phone:  
Caller Phone: (315) 446-0125  
Contact Person Phone:

Spill Date	Date Cleanup Ceased	Cause of Spill	Meets Cleanup Standards		Penalty Recommended		
03/18/1991	03/20/1991	UNKNOWN	UNKNOWN		NO		
Material Spilled		Material Class	Quantity Spilled	Units	Quantity Recovered	Units	Resource(s) Affected
GASOLINE		PETROLEUM	2.00	GALLONS	0.00	GALLONS	SOIL

## Caller Remarks:

CAR OVERFILLED. PUMP ISLAND SLOPES TOWARDS BLDG. EMPLOYEES NOTICED ODOR IN BLDG. SMALL SHEEN ON PAVEMENT.

## DEC Investigator Remarks:

Prior to Sept, 2004 data translation this spill Lead\_DEC Field was "MR"

03/20/91: OVERFILL AT PUMP ISLAND LEAD TO FUMES IN THE OFFICE AT FACILITY. FUMES DISAPEARED AFTER SPILL WAS FLUSHED AWAY.

**Map Identification Number 4**      **UNION SPRINGS FUMES**  
RTE 326 & RTE 90

UNION SPRINGS, NY

**Spill Number: 8902903****Close Date: 06/20/1989**  
TT-Id: 520A-0225-733

## MAP LOCATION INFORMATION

Site location mapped by: MANUAL MAPPING (3)  
Approximate distance from property: 458 feet to the NE

## ADDRESS CHANGE INFORMATION

Revised street: RTE 326 / RTE 90  
Revised zip code: 13160

Source of Spill: UNKNOWN  
Notifier Type: Local Agency  
Caller Name: ED TANNER  
DEC Investigator: GREGG

Spiller: UNK  
Notifier Name:  
Caller Agency: VILLAGE UNION SPRINGS  
Contact for more spill info:

Spiller Phone:  
Notifier Phone:  
Caller Phone: (315) 889-5289  
Contact Person Phone:

Spill Date	Date Cleanup Ceased	Cause of Spill	Meets Cleanup Standards		Penalty Recommended	
06/20/1989	06/20/1989	UNKNOWN	UNKNOWN		NO	
Material Spilled	Material Class	Quantity Spilled	Units	Quantity Recovered	Units	Resource(s) Affected
GASOLINE	PETROLEUM	0	UNKNOWN	0	UNKNOWN	SEWER

## Caller Remarks:

HEAVY GAS FUMES REPORTED UPON OPENING OF MANHOLE. FIRE DEPT NOTIFIED.

## DEC Investigator Remarks:

Prior to Sept, 2004 data translation this spill Lead\_DEC Field was "TG"

## Map Identification Number 5

HYDRAULIC OIL  
RT 90 & RT 326

UNION SPRINGS, NY

Spill Number: 8804574

Close Date: 06/22/1989  
TT-Id: 520A-0225-734

## MAP LOCATION INFORMATION

Site location mapped by: MANUAL MAPPING (3)  
Approximate distance from property: 458 feet to the NE

## ADDRESS CHANGE INFORMATION

Revised street: RT 90 / RT 326  
Revised zip code: 13160Source of Spill: UNKNOWN  
Notifier Type: Local Agency  
Caller Name: JIM WILSON  
DEC Investigator: VOLLMERSpiller: UNKNOWN  
Notifier Name:  
Caller Agency: NYSDOT  
Contact for more spill info:Spiller Phone:  
Notifier Phone:  
Caller Phone: (315) 252-6663  
Contact Person Phone:

Spill Date	Date Cleanup Ceased	Cause of Spill	Meets Cleanup Standards		Penalty Recommended	
08/24/1988	08/25/1988	UNKNOWN	UNKNOWN		NO	
Material Spilled	Material Class	Quantity Spilled	Units	Quantity Recovered	Units	Resource(s) Affected
NON PCB OIL	PETROLEUM	30.00	GALLONS	25.00	GALLONS	SOIL

## Caller Remarks:

SAND HAS BEEN PLACED ON SPILL ON HIGHWAY. SOIL CONTAMINATION STILL PRESENT. TANKER TRAILER PRESENT BUT TRACTOR GONE.

-----  
DEC Investigator Remarks:

Prior to Sept, 2004 data translation this spill Lead DEC Field was "DV"

08/24/88: MET ECO KELLOG AT SCENE. APPEARS TO BE BROKEN HYDRAULIC HOSE OF UNKNOWN ORIGIN. HE IS INVESTIGATING SOURCE. HIRED DOMERMUTH TO CLEAN UP ON FOLLOWING DAY. AUTHORIZE 2 MEN WITH W/SHOVELS & DRUMS.

08/25/88: CLEANUP COMPLETE. ECO KELLOGG DID NOT FIND SPILLER.

11/23/88: NEEDS ISR.

09/28/95: This is additional information about material spilled from the translation of the old spill file: HYDRUALIC FLUID.

<b>Map Identification Number 6</b>	<b>UNION SPRINGS CENTRAL SCH</b>		<b>Spill Number: 0400475</b>	<b>Close Date: 04/27/2005</b>
	239 CAYUGA STREET	UNION SPRINGS, NY		TT-Id: 520A-0225-735
<b>MAP LOCATION INFORMATION</b>		<b>ADDRESS CHANGE INFORMATION</b>		
Site location mapped by: MANUAL MAPPING (2)		Revised street: NO CHANGE		
Approximate distance from property: 1050 feet to the SE		Revised zip code: 13160		
Source of Spill: INSTITUTIONAL, EDUC, GOV, OTHER	Spiller: JEFF TRAVER - UNION SPRINGS CENTRAL SCH	Spiller Phone: (315) 889-3152		
Notifier Type: Other	Notifier Name: RORY WOODMANSEE	Notifier Phone: (315) 455-2000		
Caller Name: RORY WOODMANSEE	Caller Agency: C&S ENGINEERS	Caller Phone: (315) 455-2000		
DEC Investigator: MENASH	Contact for more spill info: JEFF TRAVER	Contact Person Phone: (315) 889-3152		

Spill Class: KNOWN RELEASE WITH MINIMAL POTENTIAL FOR FIRE OR HAZARD;DEC RESPONSE;WILLING RP;CORRECTIVE ACTION TAKEN

Spill Date	Date Cleanup Ceased	Cause of Spill	Meets Cleanup Standards		Penalty Recommended	
04/15/2004		OTHER	NO		NO	
Material Spilled	Material Class	Quantity Spilled	Units	Quantity Recovered	Units	Resource(s) Affected
UNKNOWN PETROLEUM	PETROLEUM	0	POUNDS	0	POUNDS	GROUNDWATER

-----  
Caller Remarks:

DOING EXCAVATION AND FOUND SHEEN AND ODOR:



DEC Investigator Remarks:

Prior to Sept, 2004 data translation this spill Lead\_DEC Field was "MN"  
15 April 2004-Made site visit. C&S to oversee excavation, staging and, removal of cotaminated soil.



**CLOSED STATUS HAZARDOUS SPILLS - MISC. SPILL CAUSES - EQUIPMENT FAILURE, HUMAN ERROR, TANK OVERFILL, DELIBERATE SPILL, TRAFFIC ACCIDENT, HOUSEKEEPING, ABANDONED DRUM, AND VANDALISM - IDENTIFIED WITHIN 1/2 MILE SEARCH RADIUS.**  
 All spills mapped and profiled within 1/4 mile. Between 1/4 mile and 1/2 mile search radius, spills reported to be greater than 100 units and spills reported in the NYSDEC Fall 1998 MTBE Survey are mapped and profiled. Spills reported to be less than 100 units are listed in a table at the end of this section.

Please Note: \* - Compass directions can vary substantially for sites located very close to the subject property address.

**Map Identification Number 7**

**EXPRESS MART**  
299 CAYUGA ST

UNION SPRINGS, NY

**Spill Number: 0107937**

**Close Date: 11/30/2001**  
TT-Id: 520A-0225-740

## MAP LOCATION INFORMATION

Site location mapped by: MANUAL MAPPING (3)  
 Approximate distance from property: 0 feet

## ADDRESS CHANGE INFORMATION

Revised street: NO CHANGE  
 Revised zip code: 13160

Source of Spill: GASOLINE STATION  
 Notifier Type: Affected Persons  
 Caller Name: PAT HYDE  
 DEC Investigator: BFMATTHE

Spiller: SAME  
 Notifier Name: EMPLOYEE  
 Caller Agency: EXPRESS MART  
 Contact for more spill info: JASON (EMPLOYEE)

Spiller Phone:  
 Notifier Phone:  
 Caller Phone: (315) 446-0125  
 Contact Person Phone: (315) 899-3542

Spill Class: KNOWN RELEASE WITH MINIMAL POTENTIAL FOR FIRE OR HAZARD;DEC RESPONSE;WILLING RP;CORRECTIVE ACTION TAKEN

Spill Date	Date Cleanup Ceased	Cause of Spill	Meets Cleanup Standards		Penalty Recommended	
11/03/2001		HUMAN ERROR	YES		NO	
Material Spilled	Material Class	Quantity Spilled	Units	Quantity Recovered	Units	Resource(s) Affected
GASOLINE	PETROLEUM	8.00	GALLONS	8.00	GALLONS	SOIL

## Caller Remarks:

customer did not get nozzle in to tank. all cleaned up w/speedy dry.

## DEC Investigator Remarks:

Prior to Sept, 2004 data translation this spill Lead\_DEC Field was "BM"

11/30/01: SPOKE TO JASON, THEY CLEANED UP WITH SPEEDI DRY, NO DRAINS AFFECTED. THEY CAUGHT THE DRIVER AND REPORTED IT TO THE AUTHORITIES.

**THE FOLLOWING CLOSED SPILLS FOR THIS CATEGORY WERE REPORTED BETWEEN 1/4 MILE AND 1/2 MILE FROM THE SUBJECT ADDRESS. THESE SPILLS WERE REPORTED TO BE LESS THAN 100 UNITS IN QUANTITY AND CAUSED BY: EQUIPMENT FAILURE, HUMAN ERROR, TANK OVERFILL, DELIBERATE SPILL, TRAFFIC ACCIDENT, HOUSEKEEPING, ABANDONED DRUM, OR VANDALISM. THESE SPILLS ARE NEITHER MAPPED NOR PROFILED IN THIS REPORT.**

FACILITY ID	FACILITY NAME	STREET	CITY
0804805	CORNER SPRING ST	RT 90	UNION SPRINGS



***NO OIL STORAGE FACILITIES LARGER THAN 400,000 GALLONS IDENTIFIED WITHIN 1/4 MILE SEARCH RADIUS***


**PETROLEUM BULK STORAGE FACILITIES LESS THAN 400,000 GALLONS IDENTIFIED WITHIN THE 1/4 MILE SEARCH RADIUS**

PLEASE NOTE: \* Compass directions can vary substantially for sites located very close to the subject property address.

**Map Identification Number 8**

**LAKESIDE TRADING**  
RT. 90

**Facility Id: 7-186503**

**Source: NYS DEC**

UNION SPRINGS, NY 13160

TT-Id: 640A-0081-116

**MAP LOCATION INFORMATION**

Site location mapped by: MANUAL MAPPING (5)

Approximate distance from property: 0 feet

**ADDRESS CHANGE INFORMATION**

Revised street: NO CHANGE

Revised zip code: NO CHANGE

Facility Type: Retail Gasoline Sales

Site Status: Unregistered

Expiration Date of the facility's registration certificate: 06/18/2007

Operator Name: TIMOTHY TWOGUNS

Operator Phone #: (315) 568-6457

Owner Name: TIMOTHY TWOGUNS - ENVIRONMENTAL CONTACT

Owner Company: CAYUGA NATION

Owner Type:

Owner Address: P.O. BOX 786, SENECA FALLS, NY 13148

TANK NUMBER	TANK STATUS	TANK CONTENT	CAPACITY GALLONS	TANK LOCATION	INSTALL DATE	TEST DATE	CLOSE DATE
001	Closed - Removed	Gasoline	6000	Underground	08/01/1966	06/01/1992	10/01/1995
002	Closed - Removed	Gasoline	5000	Underground	08/01/1966	06/01/1992	10/01/1995
003	Closed - Removed	Diesel	6000	Underground	08/01/1966	06/01/1992	10/01/1995
004	Closed - Removed	Gasoline	6000	Underground	08/01/1966	06/01/1992	10/01/1995
005	Closed - Removed	Kerosene	550	Aboveground on crib, rack, or cradle	09/01/1984		10/01/1995
006	Unregistered	Gasoline	10000	Underground	10/01/1995	02/20/2006	
007A	Unregistered	Gasoline	5000	Underground	10/01/1995	02/20/2006	
007B	Unregistered	Gasoline	5000	Underground	10/01/1995	02/20/2006	
008A	Administratively Closed	Diesel	5000	Underground	10/01/1995	02/23/2006	
008B	Unregistered	Kerosene	3000	Underground	10/01/1995	02/23/2006	

TANK NUMBER: 001

TANK EXT. PROTECTION: None

PIPING EXT. PROTECTN: None

PIPING TYPE: Galvanized Steel

OVERFILL PROTECTION: None

TANK TYPE: Steel/Carbon Steel/Iron

TANK LEAK DETECTN: None

PIPING LEAK DETECTN:

PIPING LOCATION: Underground/On-ground

SPILL PREVENTION:

TK INT. PROTECTION: None

TK SEC. CONTAINMNT: None

PIPE SEC. CONTAINMNT:

DISPENSER METHOD: Suction

TANK NUMBER: 002

TANK EXT. PROTECTION: None

TANK TYPE: Steel/Carbon Steel/Iron

TANK LEAK DETECTN: None

TK INT. PROTECTION: None

TK SEC. CONTAINMNT: None

\*\*\*\* TANK INFO FOR THIS SITE CONTINUES ON NEXT PAGE \*\*\*\*

PIPING EXT. PROTECTN: None  
 PIPING TYPE: Galvanized Steel  
 OVERFILL PROTECTION: None

PIPING LEAK DETECTN:  
 PIPING LOCATION: Underground/On-ground  
 SPILL PREVENTION:

PIPE SEC. CONTAINMNT:  
 DISPENSER METHOD: Suction

TANK NUMBER: 003  
 TANK EXT. PROTECTION: None  
 PIPING EXT. PROTECTN: None  
 PIPING TYPE: Galvanized Steel  
 OVERFILL PROTECTION: None

TANK TYPE: Steel/Carbon Steel/Iron  
 TANK LEAK DETECTN: None  
 PIPING LEAK DETECTN:  
 PIPING LOCATION: Underground/On-ground  
 SPILL PREVENTION:

TK INT. PROTECTION: None  
 TK SEC. CONTAINMNT: None  
 PIPE SEC. CONTAINMNT:  
 DISPENSER METHOD: Suction

TANK NUMBER: 004  
 TANK EXT. PROTECTION: None  
 PIPING EXT. PROTECTN: None  
 PIPING TYPE: Galvanized Steel  
 OVERFILL PROTECTION: None

TANK TYPE: Steel/Carbon Steel/Iron  
 TANK LEAK DETECTN: None  
 PIPING LEAK DETECTN:  
 PIPING LOCATION: Underground/On-ground  
 SPILL PREVENTION:

TK INT. PROTECTION: None  
 TK SEC. CONTAINMNT: None  
 PIPE SEC. CONTAINMNT:  
 DISPENSER METHOD: Suction

TANK NUMBER: 005  
 TANK EXT. PROTECTION: None  
 PIPING EXT. PROTECTN: None  
 PIPING TYPE: Galvanized Steel  
 OVERFILL PROTECTION: None

TANK TYPE: Steel/Carbon Steel/Iron  
 TANK LEAK DETECTN: None  
 PIPING LEAK DETECTN:  
 PIPING LOCATION: Aboveground  
 SPILL PREVENTION:

TK INT. PROTECTION: None  
 TK SEC. CONTAINMNT: None  
 PIPE SEC. CONTAINMNT:  
 DISPENSER METHOD: Suction

TANK NUMBER: 006  
 TANK EXT. PROTECTION: Painted/Asphalt Coating  
 Original Sacrificial Anode  
 PIPING EXT. PROTECTN: None  
 PIPING TYPE: Flexible Piping  
 OVERFILL PROTECTION: Float Vent Valve

TANK TYPE: Steel/Carbon Steel/Iron  
 TANK LEAK DETECTN: Interstitial - Electronic Monitoring  
 In-Tank System (ATG)  
 PIPING LEAK DETECTN: Pressurized Piping Leak Detector  
 Tank Top Sump  
 PIPING LOCATION: Aboveground/Underground Combination  
 SPILL PREVENTION: Catch Basin

TK INT. PROTECTION: None  
 TK SEC. CONTAINMNT: Double-Walled (Underground)  
 PIPE SEC. CONTAINMNT: Double-Walled (Underground)  
 DISPENSER METHOD: Submersible

TANK NUMBER: 007A  
 TANK EXT. PROTECTION: Painted/Asphalt Coating  
 Original Sacrificial Anode  
 PIPING EXT. PROTECTN: None  
 PIPING TYPE: Flexible Piping  
 OVERFILL PROTECTION: Float Vent Valve

TANK TYPE: Steel/Carbon Steel/Iron  
 TANK LEAK DETECTN: Interstitial - Electronic Monitoring  
 In-Tank System (ATG)  
 PIPING LEAK DETECTN: Pressurized Piping Leak Detector  
 Tank Top Sump  
 PIPING LOCATION: Aboveground/Underground Combination  
 SPILL PREVENTION: Catch Basin

TK INT. PROTECTION: None  
 TK SEC. CONTAINMNT: Double-Walled (Underground)  
 PIPE SEC. CONTAINMNT: Double-Walled (Underground)  
 DISPENSER METHOD: Submersible

TANK NUMBER: 007B  
 TANK EXT. PROTECTION: Painted/Asphalt Coating  
 Original Sacrificial Anode  
 PIPING EXT. PROTECTN: None  
 PIPING TYPE: Flexible Piping  
 OVERFILL PROTECTION: Float Vent Valve

TANK TYPE: Steel/Carbon Steel/Iron  
 TANK LEAK DETECTN: Interstitial - Electronic Monitoring  
 In-Tank System (ATG)  
 PIPING LEAK DETECTN: Pressurized Piping Leak Detector  
 Tank Top Sump  
 PIPING LOCATION: Aboveground/Underground Combination  
 SPILL PREVENTION: Catch Basin

TK INT. PROTECTION: None  
 TK SEC. CONTAINMNT: Double-Walled (Underground)  
 PIPE SEC. CONTAINMNT: Double-Walled (Underground)  
 DISPENSER METHOD: Submersible

\*\*\*\* TANK INFO FOR THIS SITE CONTINUES ON NEXT PAGE \*\*\*\*

TANK NUMBER: 008A  
TANK EXT. PROTECTION: Painted/Asphalt Coating  
Original Sacrificial Anode  
PIPING EXT. PROTECTN: None

PIPING TYPE: Flexible Piping  
OVERFILL PROTECTION: Float Vent Valve

TANK NUMBER: 008B  
TANK EXT. PROTECTION: Painted/Asphalt Coating  
Original Sacrificial Anode  
PIPING EXT. PROTECTN: None

PIPING TYPE: Flexible Piping  
OVERFILL PROTECTION: Float Vent Valve

TANK TYPE: Steel/Carbon Steel/Iron  
TANK LEAK DETECTN: Interstitial - Electronic Monitoring  
In-Tank System (ATG)  
PIPING LEAK DETECTN: Pressurized Piping Leak Detector  
Tank Top Sump

PIPING LOCATION: Aboveground/Underground Combination  
SPILL PREVENTION: Catch Basin

TANK TYPE: Steel/Carbon Steel/Iron  
TANK LEAK DETECTN: Interstitial - Electronic Monitoring  
In-Tank System (ATG)  
PIPING LEAK DETECTN: Pressurized Piping Leak Detector  
Tank Top Sump

PIPING LOCATION: Aboveground/Underground Combination  
SPILL PREVENTION: Catch Basin

TK INT. PROTECTION: None  
TK SEC. CONTAINMNT: Double-Walled (Underground)

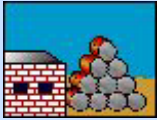
PIPE SEC. CONTAINMNT: Double-Walled (Underground)

DISPENSER METHOD: Submersible

TK INT. PROTECTION: None  
TK SEC. CONTAINMNT: Double-Walled (Underground)

PIPE SEC. CONTAINMNT: Double-Walled (Underground)

DISPENSER METHOD: Submersible



***NO HAZARDOUS WASTE GENERATORS/TRANSPORTERS IDENTIFIED WITHIN THE 1/4 MILE SEARCH RADIUS***





***NO CHEMICAL STORAGE FACILITIES IDENTIFIED WITHIN 1/4 MILE SEARCH RADIUS***



***NO HAZARDOUS SUBSTANCE WASTE DISPOSAL SITES IDENTIFIED WITHIN 1/2 MILE SEARCH RADIUS***



***NO TOXIC AIR, LAND AND WATER RELEASES IDENTIFIED WITHIN 1/4 MILE SEARCH RADIUS***



***NO WASTEWATER DISCHARGES IDENTIFIED WITHIN 1/4 MILE SEARCH RADIUS***



***NO AIR DISCHARGE FACILITIES IDENTIFIED WITHIN 1/4 MILE SEARCH RADIUS***



***NO CIVIL & ADMINISTRATIVE ENFORCEMENT DOCKET FACILITIES IDENTIFIED WITHIN THE 1/4 MILE SEARCH RADIUS***

U.S. EPA EMERGENCY RESPONSE NOTIFICATION SYSTEM (ERNS)  
AT THE LOCATION OR POTENTIALLY AT THE LOCATION OF  
Union Springs - Cayuga Street  
Union Springs, NY 13160

\* Any ERNS Spills listed below are NOT mapped in this report \*

POTENTIALLY ONSITE ERNS:

\*\*\*\*\*

Spill Number (ID): 419904

Spill Date: 02/24/1995

Location: RT 90

Spill City: UNION SPRINGS

NY

Material Spilled	Quantity Spilled	Units	Pounds	Quantity Released in Water	Units	Casno
GASOLINE: AUTOMOTIVE (UNLEADED)	0.00	UNK	0.00	0.00	UNK	

Potentially Responsible Party (Discharger): SUNOCO GAS/SUNSHINE FOOD

Discharger Address:

VESTAL

NY

Dun and Bradstreet Number:

Organization Type: PRIVATE ENTERPRISE

Medium(s) Affected:

Air: F Land: T Water: F Groundwater: F Contained within Fixed Facility: F Other: F

Waterway Affected: UNKNOWN

Damages Incurred: F Estimated Cost of Property Damage: \$0.00

Cause(s):

Transportation Accident: F Equipment Failure: F

Operator Error: F Natural Phenomenon: F

Dumping: F Other Cause: F

Unknown: F

Cause of the incident:

Source of Release:

Type of Transportation Involved: FIXED FACILITY

Action: PLUGGED UP ENTRANCE LINE TO STATION/MAY BE HOLE IN TANK AT STATION

Description: 2" PIPE/LEAK

Miscellaneous: WILL CALL: DEC

\*\*\*\*\*

## Unmappable facilities for 'Cayuga' County

## NPL/CERCLIS/NYSDEC Inactive Haz. Waste or Reg. Qual. Sites

FACILITY ID	FACILITY NAME	STREET	CITY	ZIP
706012	CAYUGA COUNTY GROUNDWATER CONTAMINATION	IN THE AREA OF NYS ROUTE 90	UNION SPRINGS	UNKNOWN
NYN000204289	CAYUGA GROUNDWATER CONTAMINATION SITE	STATE ROUTE 326	UNION SPRINGS	UNKNOWN

## Solid Waste Facilities

FACILITY ID	FACILITY NAME	STREET	CITY	ZIP
06L01	OMNI GROUP FARMS INC.			UNKNOWN
06L20	ADM CORN SWEETNERS			UNKNOWN
06L70	ANHEUSER-BUSCH CO. SITE 1			UNKNOWN

## Hazardous Spills - MISC. SPILL CAUSES - Active

FACILITY ID	FACILITY NAME	STREET	CITY	ZIP
0807139	BREAD AND BUTTER STORE	RD#3 STATE STREET		UNKNOWN

## Hazardous Spills - TANK FAILURES - Closed

FACILITY ID	FACILITY NAME	STREET	CITY	ZIP
9310962	BW INN	BW INN		UNKNOWN

## Hazardous Spills - TANK TEST FAILURES - Closed

FACILITY ID	FACILITY NAME	STREET	CITY	ZIP
9011573	CAYUGA CO BULK SERVICE	RT 90	CAYUGA	13034
8703368	SPRINGPORT TOWN GARAGE	ROUTE 326	SPRINGPORT	UNKNOWN
8700579	PETRAL INC. - CAYUGA ST.	CAYUGA STREET	UNION SPRINGS	13160

## Hazardous Spills - UNKNOWN CAUSE OR OTHER CAUSES - Closed

FACILITY ID	FACILITY NAME	STREET	CITY	ZIP
9004394	C & C MARINA	C&C MARINA		UNKNOWN
8707180	TALLMADGE TIRE	TALLMADGE TIRE		UNKNOWN
8606915	VOID -DUPLICATE OF 866894			UNKNOWN
9413784	BEACON BAY MARINA	BEACON BAY MARINA	CAYUGA	13034
0312540	THE MARINA CAMPGROUND PRO	483 BACKUS RD	CAYUGA	13034
0105851	CAYUGA LAKE	1831 HONOCO LAKE RD	CAYUGA	13034
9800605	PRIVATE RD	6 LAKESHORE DR	CAYUGA (V)	13034
9406517	CAYUGA LAKE SHEEN	CAYUGA LAKE- HIBISCUS BAY	SPRINGPORT	UNKNOWN
8703162	CAYUGA LAKE	HIBISCUS HARBOR	SPRINGPORT	UNKNOWN
9007584	SLUDGE IN CREEK	YAGER BROOK	UNION SPRINGS	13160
8903478	SPRING PORT COVE	PRINGPORT COVE	UNION SPRINGS	13160
8100540			UNION SPRINGS	13160
0704035	FRONTNAC PARK / CAYUGA L	CAYUGA LAKE	UNION SPRINGS	13160

## Hazardous Spills - MISC. SPILL CAUSES - Closed

FACILITY ID	FACILITY NAME	STREET	CITY	ZIP
9614219	CAYUGA LAKE	RT 90 CAYUGA	CAYUGA	13034
9411227	CAYUGA BULK SERVICE	ROUTE 90 BOX 496	CAYUGA	13034
9410705	305 STANTON HILL RD.	305 STANTON HILL RD.	NICHOLAS	UNKNOWN
9105163	PLASTER PT RD	PLASTER POT RD.	SPRINGPORT	UNKNOWN
0505596	ROUTE 326 NYSEG TRANSFORMER	1644 ROUTE 326	SPRINGPORT	13034
9704512	CATCHBASIN	RT 90	UNION SPRINGS	13160
9415451	DAY & NIGHT UNION SPRINGS	DAY & NIGHT SUNSHINE FOOD	UNION SPRINGS	13160
9304611	HIBISCUS HARBOR	HIBISCUS HARBOR ACCESS RD	UNION SPRINGS	13160
9304350	GORDON C PALMER CO	S CAYUGA ST	UNION SPRINGS	13160
9104798	WHEEL HOUSE RESTAURANT	HARBOR DRIVE	UNION SPRINGS	13160
9007856	TRW-UNION SPRINGS	107 SALEM ST	UNION SPRINGS	13160
9003252	PLASTER POINT ROAD	PLASTER POINT	UNION SPRINGS	13160



8808131	WICKES MFG. TCE	SALEM ST. & SPRING ST.	UNION SPRINGS	13160
8801317	WICKS MFG.	107 SALEM ST.	UNION SPRINGS	13160
8709152	PETROL CORP.	PETROL CORP.	UNION SPRINGS	13160
0712188	CAYUGA LAKE	SOUTH OF FIRE LANE 20	UNION SPRINGS	13160
Petroleum Bulk Storage Facilities				
FACILITY ID	FACILITY NAME	STREET	CITY	ZIP
7-103322	TOWN OF SPRINGPORT	RT. 326 BOX 859	CAYUGA	13034
7-186406	UNION SPRINGS CITGO	MAIN ST	UNION SPRINGS	13160
7-437964	STUART JORDAN	RD #1	UNION SPRINGS	13160
7-447501	TRADE-A-YACHT, INC.	HARBOR DR.	UNION SPRINGS	13160
7-600795	BILL GROW'S	117 CAYUGA ST.	UNION SPRINGS	13160
Hazardous Waste Generation or Transport Facilities				
FACILITY ID	FACILITY NAME	STREET	CITY	ZIP
NYD986912723	NYS DOT	ROUTE 90 TO CAYUGA	CAYUGA	13034
NYN700000028	TOWN OF SPRINGPORT	R.D. #1, BOX 814A	CAYUGA	13034
NYP000790048	NYSDEC-SPILLS	789 CAYUGA CREEK	CAYUGA	UNKNOWN
NYD986953909	NYS DOT	GUARD GATE	CAYUGA LAKE	13034
NYD013314133	GORDON C PALMER INC	PO BOX 40 - CAYUGA ST	UNION SPRINGS	13160
NYD982183469	PALMER CHEVROLET	S CAYUGA ST	UNION SPRINGS	13160
NYD986987055	DAY & NIGHT #20	RTE 90 & MAIN ST	UNION SPRINGS	13160
Wastewater Discharges				
FACILITY ID	FACILITY NAME	STREET	CITY	ZIP
NY0025241	CAYUGA (V) WPCF	ROUTE 90	CAYUGA	13034
Air Releases				
FACILITY ID	FACILITY NAME	STREET	CITY	ZIP
3601100002	BEACON MILLING INC	OFFICE	CAYUGA	13034

**Hazardous waste codes presented in individual Toxic Information Profiles are defined below.**

Source: U. S. Environmental Protection Agency

# How Toxic Site Locations Are Mapped

*Toxics Targeting* maps toxic site locations on a computerized version of the U. S. Census map using addresses and map coordinates provided by site owners/operators or government agencies. In order to allow site locations to be verified independently, the information used to map each site is presented in the first section of each *Toxic Site Profile*, along with a description of the mapping technique used and any address corrections that were made in order to locate toxic sites with incomplete or inadequate site location information. The mapping process is explained below.

Map Identification Number: 12

Site Name: Acme World Manufacturing, Inc.

Site Address: 55 Main Street

Anytown, NY 11797

## MAP LOCATION INFORMATION

Site location mapped by:

Address Matching

1) Most toxic sites are mapped by matching addresses provided by site owners/operators or government agencies with locations on a computerized version of the U. S. Census map. These site locations are identified "address-matched."

*Note: Some sites have an address match location and a map coordinate location. Both locations are mapped because they can be equally correct.*

or Map Coordinate

2) Some toxic sites are located using map coordinates provided by site owners/operators or government agencies. These site locations are identified "map coordinate." Map coordinates for Toxics Wastewater Discharges, Toxic Release Inventory sites and Major Oil Storage Facilities should be considered suspect.

or Manual Mapping

or Site Visit

3) Incomplete addresses or map coordinates require some site locations to be determined by commercial street maps (manual mapping), site visits, map coordinates from other databases and address location services. Application of any of these methods is identified accordingly.

## ADDRESS CHANGE INFORMATION

Revised Street: NO CHANGE

Revised zip code: NO CHANGE

4) Site addresses are sometimes corrected to eliminate obvious errors that prevent sites from being mapped. All address corrections are noted here.

# Information Source Guide

*Toxics Targeting's Environmental Reports* contain government and other information compiled on 18 categories of reported known or potential toxic sites. Each toxic site database is described below with information detailing a) the source of the information, b) the date when each database is covered to and c) when *Toxics Targeting* obtained the information..

1) **National Priority List for Federal Superfund Cleanup:** Toxic sites nominated for cleanup under the Federal Superfund program. Annual compilation of special two-page detailed profiles of NPL sites. Also includes delisted NPL sites.

ASTM required.\* Fannie Mae required.\*\*

Source: U. S. Environmental Protection Agency.<sup>1</sup>

Data attributes updated from: 2/3/2009.

Data obtained by Toxics Targeting: 2/3/2009.

New Facilities updated through: 2/3/2009.

Data obtained by Toxics Targeting: 2/3/2009.

2) **Inactive Hazardous Waste Disposal Site Registry:** New York State database that maintains information and aids decision making regarding the investigation and cleanup of toxic sites. The Registry's data includes two-page profiles noting site name, ID number, description, classification, cleanup status, types of cleanup, owner information, types and quantities of contaminants, and assessment of health and environmental problems. Also included are sites that qualify for possible inclusion on the Registry. These Registry Qualifying sites may or may not be on the Site Registry.

ASTM required.\* Fannie Mae required.\*\*

Source: New York State Department of Environmental Conservation.<sup>2</sup>

Data attributes updated through: 9/02/2008.

Data obtained by Toxics Targeting: 9/02/2008.

New Facilities updated to: 9/02/2008.

Data obtained by Toxics Targeting: 9/02/2008.

3) **Corrective Action Activity (CORRACTS):** U. S. Environmental Protection Agency database of hazardous facilities regulated pursuant to the Resource Conservation and Recovery Act (RCRA).

ASTM required.\* Fannie Mae required.\*\*

Source: U. S. Environmental Protection Agency<sup>1</sup>

Data attributes updated through: 6/25/2008.

Data obtained by Toxics Targeting: 6/27/2008.

New facilities updated through: 6/25/2008.

Data obtained by Toxics Targeting: 6/27/2008.

4) **CERCLIS:** Toxic sites listed in the Federal Comprehensive Environmental Response, Compensation and Liability Information System. No Further Remedial Action Planned (NFRAP) sites are also included.

ASTM required.\* Fannie Mae required.\*\*

Source: U. S. Environmental Protection Agency.<sup>1</sup>

Data attributes updated through: 1/09/2008.

Data obtained by Toxics Targeting: 3/12/2008.

New Facilities updated through: 1/09/2008.

Data obtained by Toxics Targeting: 3/12/2008.

5) **Brownfield Programs:** NYS programs for sites that are abandoned, idled or under-used industrial and/or commercial sites where expansion or redevelopment is complicated by real or perceived environmental contamination.

ASTM required.\*

Source: New York State Department of Environmental Conservation.<sup>2</sup>

Data attributes updated through: 9/02/2008.

Data obtained by Toxics Targeting: 9/02/2008.

New Facilities updated to: 9/02/2008.

Data obtained by Toxics Targeting: 9/02/2008.

(a) Brownfield Cleanup Program (BCP)

(b) Voluntary Cleanup Program (VCP)

(c) Environmental Restoration Program (ERP)

6) **Solid Waste Facilities:** NYS database of solid waste facilities, including, but not limited to, landfills, incinerators, transfer stations, recycling centers.

ASTM required.\* Fannie Mae required.\*\*

Source: New York State Department of Environmental Conservation.<sup>2</sup>

Data updated to: 12/31/2001.

Data obtained by Toxics Targeting: 3/16/2002.

7) **RCRA Hazardous Waste Treatment, Storage or Disposal Facility Databases:**

(a) **Manifest Information:** New York State database of hazardous waste facilities and shipments regulated by the DEC's Bureau of Hazardous Waste Facility Compliance pursuant to NYS Law and the Resource Conservation and Recovery Act (RCRA).

ASTM required.\* Fannie Mae required.\*\*

Source: New York State Department of Environmental Conservation.<sup>2</sup>

New facilities updated through: 6/25/2008.

New facilities obtained by Toxics Targeting: 6/27/2008.

Manifest transactions data updated to: 6/25/2008.

Manifest transactions data obtained by Toxics Targeting: 6/27/2008.

(b) **RCRA Notifier & Violations Information:** U. S. Environmental Protection Agency database of hazardous facilities regulated pursuant to the Resource Conservation and Recovery Act (RCRA).

ASTM required.\* Fannie Mae required.\*\*

Source: U. S. Environmental Protection Agency<sup>1</sup>

New facilities updated through: 6/25/2008.

Data obtained by Toxics Targeting: 6/27/2008.

Data attributes updated through: 6/25/2008.

Data obtained by Toxics Targeting: 6/27/2008.

8) **Spills Information Database:** Spills reported to the DEC as required by one or more of the following: Article 12 of the Navigation Law, 6 NYCRR Section 613.8 (from Petroleum Bulk Storage Regulations) or 6 NYCRR Section 595.2 (from Chemical Bulk Storage Regulations). The database includes *active* and *closed* spills reported on or before 1/21/2009. ASTM required.\* Fannie Mae.\*\* Source: NYS Department of Environmental Conservation.<sup>2</sup>

Spill attribute data through: 1/21/2009  
New spills through: 1/21/2009

Spill attribute data obtained by Toxics Targeting: 1/21/2009  
New spills data obtained by Toxics Targeting: 1/21/2009

Active spills: paperwork not completed.

Closed spills: paperwork completed.

Both active and closed spills may or may not have been cleaned up (see Date Cleanup Ceased in spill profiles).

9) **Major Oil Storage Facilities:** NYS database of facilities licensed pursuant to Article 12 of the Navigation Law, 6 NYCRR Parts 610 and 17 NYCRR Part 30, such as onshore facilities or vessels, with petroleum storage capacities equal to or greater than four hundred thousand gallons. **Tank and other data withheld by NYSDEC as of 4/1/2002.** ASTM required.\* Fannie Mae required.\*\* Source: New York State Department of Environmental Conservation.<sup>2</sup>

Data updated through: 11/21/2008.

Data obtained by Toxics Targeting: 11/21/2008.

10) **Petroleum Bulk Storage Facilities:** Local and State databases of aboveground and underground petroleum storage facilities with a combined storage capacity over 1,100 gallons.

ASTM required.\* Fannie Mae required.\*\*

Source: NYS Department of Environmental Conservation.<sup>2</sup>

All New York Counties except Cortland, Nassau, Rockland, Suffolk, and Westchester:

New facilities updated through: 4/2/2007.

Data obtained: 4/5/2007.

Individual tank data updated through: 4/2/2007.

Data obtained by Toxics Targeting: 4/5/2007.

Cortland County:

Source: Cortland County Health Department<sup>7</sup>

Data updated through: 7/15/2004

Data obtained by Toxics Targeting: 7/23/2004

Nassau County:

Heat producing products and other products with less than 1,000 gallons storage capacity:

Source: Nassau County Department of Health.<sup>3</sup>

Data updated through: 4/1/2001.

Data obtained by Toxics Targeting: 1/2/2002.

Generally non-heat producing products with more than 1,000 gallons storage capacity:

Source: Nassau County Fire Marshal.<sup>4</sup>

Data updated through: 9/27/1996 for mapped sites; 03/21/2000 for on-site checks.

Rockland County:

Source: Rockland County Department of Health.<sup>5</sup>

Data updated through: 4/13/2004.

Data obtained by Toxics Targeting: 4/16/2004.

Suffolk County:

Source: Suffolk County Department of Health Services.<sup>6</sup>

Data updated through: 6/21/2005.

Data obtained by Toxics Targeting: 7/12/2006.

Westchester County:

Source: NYS Department of Environmental Conservation.<sup>2</sup>

Data updated through: 10/1/1998

#### 11) **RCRA Hazardous Waste Generators and/or Transporters Databases:**

(a) **Manifest Information:** New York State database of hazardous waste facilities and shipments regulated by the NYS Department of Environmental Conservation's Bureau of Hazardous Waste Facility Compliance pursuant to New York State Law. ASTM required.\* Fannie Mae required.\*\* Source: New York State Department of Environmental Conservation.<sup>2</sup>

New facilities updated through: 6/25/2008.

New facilities obtained by Toxics Targeting: 6/27/2008.

Manifest transactions data updated to: 6/25/2008.

Manifest transactions data obtained by Toxics Targeting: 6/27/2008.

(b) **RCRA Notifier & Violations Information:** U. S. Environmental Protection Agency database of hazardous facilities regulated pursuant to the Resource Conservation and Recovery Act (RCRA).

ASTM required.\* Fannie Mae required.\*\*

Source: U. S. Environmental Protection Agency<sup>1</sup>

New facilities updated through: 6/25/2008.

Data obtained by Toxics Targeting: 6/27/2008.

Data attributes updated through: 6/25/2008.

Data obtained by Toxics Targeting: 6/27/2008.

12) **Chemical Bulk Storage Facilities**: New York State database of facilities compiled pursuant to 6NYCRR Part 596 that store regulated substances listed in 6NYCRR Part 597 in aboveground tanks with capacities greater than 185 gallons and /or in underground tanks of any size. **Tank and other data withheld by NYSDEC as of 4/1/2002.**

ASTM required.\* Fannie Mae required.\*\*

Source: New York State Department of Environmental Conservation.<sup>2</sup>

Data updated through: 11/21/2008.

Data obtained by Toxics Targeting: 11/21/2008.

13) **Hazardous Substance Waste Disposal Site Study**: NYS database of waste disposal sites that may pose threats to public health or the environment, but could not be remediated using monies from the Hazardous Waste Remedial Fund.

Source: New York State Department of Environmental Conservation.<sup>2</sup>

Data updated to: 5/16/2000.

Data obtained by Toxics Targeting: 5/16/2000.

14) **Toxic Release Inventory (TRI)**: Federal database of manufacturing facilities required under Section 313 of the Federal Emergency Planning and Community Right-to-Know Act to report releases to the air, water and land of any specifically listed toxic chemical. See Fannie Mae requirement\*\* below.

Source: U. S. Environmental Protection Agency.<sup>1</sup> / NYS Department of Environmental Conservation<sup>2</sup>

Data updated through: 3/8/2004.

Data obtained by Toxics Targeting: 3/25/2004

15) **Toxic Wastewater Discharges (Permit Compliance System)**: Federal database of discharges of wastewater to surface waters and groundwaters. See Fannie Mae requirement\*\* below. Source: U. S. Environmental Protection Agency.<sup>1</sup>

Data updated through: 6/17/2004.

Data obtained by Toxics Targeting: 7/19/2004.

16) **Air Discharge Facilities**: EPA AIRS database containing address information on each air emission facility and the type of air pollutant emission it is. Compliance information is also provided on each pollutant as well as the facility itself.

See Fannie Mae requirement\*\* below.

Source: U. S. Environmental Protection Agency<sup>1</sup>

Data updated through: 11/24/1999.

Data obtained by Toxics Targeting: 1/6/2000

17) **Civil Enforcement & Administrative Docket**: This database is the U. S. EPA's system for tracking administrative and civil judiciary cases filed on behalf of the agency by the Department of Justice. Fannie Mae required.\*\*

Source: U. S. Environmental Protection Agency.<sup>1</sup>

New Sites through: 10/14/1999.

Data updated through: 10/14/1999.

Data obtained by Toxics Targeting: 11/18/1999.

18) **Emergency Response Notification System (ERNS)**: Federal database of spills compiled by the Emergency Response Notification System. On-site searches only.

ASTM required.\* See Fannie Mae requirement\*\* below.

Source: U. S. Environmental Protection Agency.<sup>1</sup>

Data updated through: 1/31/2000.

Data obtained by Toxics Targeting: 2/15/2000

\* American Society of Testing Materials: Standard Practice on Environmental Site Assessments: Phase I Environmental Site Assessment Process (E1527-05).

\*\* Fannie Mae's Part X Environmental Hazards Management Procedures specify 1.0 mile searches for "any state or Federal list of hazardous waste sites (e.g. CERCLIS, HWDMS etc.)." Searches for the property and adjacent properties are specified for "chemical manufacturing plants," "obvious high risk neighbors engaging in storing or transporting hazardous waste, chemicals or substances" and "...any documented or visible evidence of dangerous waste handling... (e.g. stressed vegetation, stained soil, open or leaking containers, foul fumes or smells, oily ponds, etc)." Searches for property and adjacent properties can include sites up to a quarter mile away (W. Hayward, Director, Multi-Family Business Planning and Control, Fannie Mae, personal communication, 5/94).

<sup>1</sup>U. S. Environmental Protection Agency, 290 Broadway, NY, NY 10007-1866.

<sup>2</sup>NYS Department of Environmental Conservation, 625 Broadway, Albany, NY 12233.

<sup>3</sup>Nassau County Department of Health, Bureau of Land Resources Management, 240 Old Country Road, Mineola, NY 11501.

<sup>4</sup>Nassau County Fire Commission, Office of the Fire Marshal, 899 Jerusalem Avenue, P. O. Box 128, Uniondale, NY 11553.

<sup>5</sup>Rockland County Department of Health, The Dr. Robert Yeager Health Center, Building D, Sanitorium Road, Pomona, NY 10970.

<sup>6</sup>Suffolk County Department of Health, Hazardous Materials Management, 15 Horseblock Place, Farmingville, NY 11738-1220.

<sup>7</sup>Cortland County Department of Health, 60 Central Avenue, Cortland, NY 13045-2746